

# Stoneleigh & Ashow *News*



**December 2023**  
**January 2024**

## **“The Heart of Stoneleigh” defibrillator in the phone box on The Green and at Stoneleigh Village Hall**

**Co-ordinator: David Ellwood 07785 284482 text if no reply**

### **Trained volunteers:**

John Churchley .....	07885 496795	Laura Elliot .....	07738 222969
David Ellwood .....	07785 284482	Richard Hancox .....	07596 276829
Ian Huston .....	07974 237331	Sharron McEldowney ..	07760 101775
Claire Neale .....	07557 675842	Lisa Reay .....	07716 416320
Martin Smith .....	07958 955629	Mary Taylor .....	07890 535506

**Remember: Always ring 999 first!**



## **Distributing the News**

**Sheila Woolf**

I should like to say a big “thank you” to all of those who distribute the printed copies of this magazine each month in the villages of Stoneleigh and Ashow – they’re out in all weathers! You know who you are... your help is much appreciated!

# Stoneleigh Community Orchard CIC Update

---

Pete Freeman

**W**ith apple picking and pressing completed in the last week of October and matching the previous year's volume of 1700 litres, operations have wound down. Our harvesting fortunately avoided the worst effects of Storm Babet, given that trees located closest to the river had been cropped earlier in the month and so avoided the consequent flooding. Such events are a normal occurrence at this time of year and, in common with all flood plains, contribute to the fertility of the adjacent land, so can be considered as part of a natural and favourable cycle.

However, we did suffer our own mini Storm Babet within the confines of the cider processing plant. This occurred thanks to a requirement to elevate the alcohol content of a particular 300-litre polythene container of cider earmarked to supply the East Chase Farm distillery for brandy production. The addition of a five-kilogram bag of sugar to the tank led to unintended consequences, with an ensuing violent reaction that shook the tank and caused juice to Geyser from the open top. After a lot of mopping up, normality was restored and lessons learned – we are, after all, dealing with a chemical reaction. The teachings from decades-old chemistry lectures returned to mind, as well as recognising the sobering reality that none of us is above miscalculation. I am pleased to inform readers that, as this article is being written, the process of alcohol production has once again assumed stability and is less kinetic!

I am informed by Luke Weetman of East Chase Distillers at East Chase Farm that our distilled cider has already produced a Stoneleigh brandy that has a pleasant, smooth texture, and that they are selecting several botanicals (including liquorice, blackberries, cinnamon, oris root and bitter apple) to further enhance its qualities prior to ageing in cherry-wood barrels. It certainly sounds like a delight for winters and, indeed, Christmases to come. The Orchard Group, I am sure, will have plenty to discuss over the traditionally quieter winter period, not least our ongoing operational challenges as well as orchard pruning to address.

Finally, on behalf of the Orchard Board, I would like to wish everyone season's greetings and a Happy New Year!

Orchard Friends' subscriptions and yearly renewals for 2023 cost £10 and can be made to Pete Freeman as Chairman or to Richard Hancox as Treasurer. Cheques should be made payable to Stoneleigh Village Community Orchard. Alternatively, why not become a long-term Friend and set up a direct debit?

Contact: Pete Freeman (Chairman)  
5 Church Lane, Stoneleigh  
[petefreeman773@gmail.com](mailto:petefreeman773@gmail.com)

Richard Hancox (Treasurer)  
[richard.hancox@highwaysengland.co.uk](mailto:richard.hancox@highwaysengland.co.uk)





**Seniors Helping Seniors®**  
...A WAY TO GIVE AND TO RECEIVE®

**5 Star Customer Rating**

★★★★★



**Award winning home care for seniors by seniors**  
Non-medical support when you need a little help at home.  
Provided by local, life-experienced people that want to help.  
This is home care: A Different Way.

**Companionship . Daily Living Assistance . Respite  
Meal Prep . Shopping . Housekeeping . Light DIY  
Transportation . Medical Appointments  
Hospital Discharge . Medication Prompting  
Dementia Care . Gardening . Pet Care . Tech Support  
Overnights ...and much more!**

We provide services across the Solihull & Warwick region.  
Our same-person care is tailored to you. To find out more about  
receiving care or to work with us, please call or email at

 **01564 335875 | 01926 354688**  
[info@seniorshelpingseniors.co.uk](mailto:info@seniorshelpingseniors.co.uk)  
[www.seniorshelpingseniors.co.uk](http://www.seniorshelpingseniors.co.uk) 

# Stoneleigh Village Club Update

---

[www.facebook.com/stoneleighvillageclub](http://www.facebook.com/stoneleighvillageclub)

[stoneleigh.villageclub@gmail.com](mailto:stoneleigh.villageclub@gmail.com)

**A**s always, it has been a busy time at the club! Halloween was a great event, well attended and enjoyed by everyone, but perhaps especially by the children! This was swiftly followed by the Stoneleigh village bonfire, which again was well attended and enjoyed by all. Many thanks to everyone involved in the planning of these events and for all the help provided. Thanks also to the Meadow Society for their support.

As Christmas approaches, we look forward to welcoming you all for a drink and a warm by the fire! Keep an eye out on the noticeboard for special events. We are planning:

## December

Saturday 2 <sup>nd</sup>	8.00pm, Quiz
Sunday 10 <sup>th</sup>	Children's Christmas Bingo
Wednesday 13 <sup>th</sup>	Ladies' Night - all welcome!
Saturday 16 <sup>th</sup>	Children's Christmas Party <i>There may be an appearance by the big man himself!</i>
Saturday 23 <sup>rd</sup>	Christmas Quiz <i>Get your team's name down at the bar. The Christmas raffle will be drawn too. Make sure you have some tickets (for sale behind the bar) to win a grand Christmas hamper!</i>
Sunday 31 <sup>st</sup>	New Year's Eve drinks and celebrations!

## January

Saturday 6 <sup>th</sup>	Bingo
Saturday 20 <sup>th</sup>	New Year's gin extravaganza!

We look forward to meeting friends and neighbours, old and new. **Please keep an eye on all noticeboards for more details.**

You may be aware that Jim has been off work for a few weeks following an accident where he hurt his leg quite badly. We understand that he is getting better, and we are sure you will all join us in wishing Jimmy a full recovery. Many thanks to Karen, Fletch, Adele, John Waters and Rory, who have all stepped in to help keep the club running in Jimmy's absence.

This is the last News for 2023. SVC Committee and helpers wish you all a VERY MERRY CHRISTMAS and a Happy New Year in 2024.

*Your SVC Committee*



Vicarage Road, Stoneleigh, Warwickshire CV8 3DH 024 7641 4440  
Stoneleigh Village Club Ltd. Registered in England No 8560869



## **Becky's Cuts**

**Mobile – 07399516197**

**email – [udell353@gmail.com](mailto:udell353@gmail.com)**

**Level 2 Qualified Mobile Hairdresser local in Baginton**

**Blow dry – 10.00**

**Perms – 10.00**

**Setting styles – 10.00**

**Highlights/Foils/cap – 30.00**

**Cuts – 15.00**





**The United Benefice of  
Stoneleigh and Ashow**

**Children's Special Services**

**Sunday 10th December, 11am – Stoneleigh**

**Exploring the Annunciation Story**

**(Dressing up as angels!)**

**Sunday 24th December**

**Christingle Service, 10am – Ashow**

**Crib Service, 3pm – Stoneleigh**

**Sunday 14th January, 11am – Stoneleigh**

**Exploring the Epiphany Story**



**For unto us  
a child is born!**

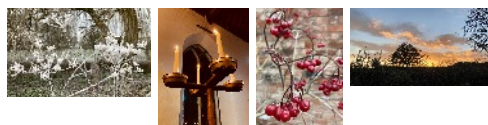
# Boxing Day Mummers

Dick Dixon

**W**e will be performing the Mummers play again this year on Tuesday 26<sup>th</sup> December 2023 (Boxing Day). As is traditional, we will begin in Ashow at 10.00am, moving on to Stoneleigh at 11.00am, with our last performance outside Stoneleigh Village Club at 1.15pm.

We will have some time to fill in Stoneleigh, which means that we could visit some other houses; we are looking for something between 11.30am and 1.00pm. If anybody in the village is having a family party, we would love to visit!

If you're interested, do please call me on 07831 890905 or drop me an email at [sing@dickdixon.co.uk](mailto:sing@dickdixon.co.uk).



Photos by Lucy Morris  
(Taken in Stoneleigh and Ashow)

# Stoneleigh History Society

---

Sheila Woolf

**W**e thoroughly enjoyed our “tale of mystery and imagination” at our October meeting, when we were invited to judge whether the subject of our talk had died though murder, suicide or accident (prosaically, we voted “accident”!).

Our November meeting will be less contentious but equally interesting, as we shall be hearing about a local woman, Cicely Neale, a leading suffragette who was the daughter of the long-serving Westwood School Headmaster. We meet at the village hall at 7.30pm on 28<sup>th</sup> November, and our speaker, Christine Cluley, is well-known in the area. Visitors will be made very welcome.

Our December meeting will be a members-only Christmas Social.

In 2024, we have a full and varied programme, which can be viewed on our website <https://stoneleighhistorysociety.org.uk/>. We begin on 30<sup>th</sup> January with a talk about William Gascoyne, a stonemason who was responsible for many of the most important buildings in Leamington. Why not make this the year you join us? You are welcome to come along to any meeting as a visitor, to get a taste of what we do.

Stoneleigh History Society



# Stoneleigh WI

---

Liz Sykes

**O**ur meeting in November was given by Alan Deeley, a beekeeper who lives in Burton Green. It was a fascinating talk – I'd never known so much about bees and their habitats, or how intelligent they are and how they select their queen! It was so interesting.

For the remainder of December and January, the craft group will meet every Monday morning. Do drop in for a coffee – you'll be made very welcome. We plan to make some Father Christmases.

We have the lunch club on Thursday 22<sup>nd</sup> November at the Malt Shovel in Bubbenhall; always a popular venue. In December, the Christmas lunch will be at Stoneleigh Golf Club on Tuesday 12<sup>th</sup>. Please join us on either occasion, both of which will start at 12.30pm.

The speaker at our December meeting will be Eddie Smallwood, who gave us a talk earlier this year on the blood and guts of the English civil war – it was very good. However, this time will be about Christmas though the ages, so promises to be more peaceful. I'm sure that it will be very interesting. There will be festive refreshments available. If you're free on Monday 4<sup>th</sup> December at 2.00pm, we look forward to seeing you.

Our meeting in January will be on Monday 8<sup>th</sup> at 2.00pm in the Hall. The speaker will be Julia Mitchell, with a talk entitled "From IT to Tai Chi" – could be very interesting!

We look forward to seeing you there. Everyone is welcome.



# Stoneleigh Ladies' Choir

---

Pat Wightman

**P**reparation for Christmas continues with some new and familiar music for the choir to perform at Cannon Park Shopping Centre on Thursday 14<sup>th</sup> December and at the Carol Service at Stoneleigh Church on Sunday 17<sup>th</sup> December.

The choir has chosen Taste Life as its charity to support this year. Although it's a national organisation, the choir will be supporting the local branch. Taste Life is a charity which supports men, women and children with eating disorders which, in some cases, may be life-threatening. In addition to the above charity, the choir is also supporting the local foodbank. With Christmas nigh, there is tremendous pressure on this organisation to support the local community, so the choir will be collecting food at the Village Hall on the afternoons of Thursday 7<sup>th</sup> and Thursday 14<sup>th</sup> December. If you can donate dried or tinned food, please bring whatever you can to the Hall between 1.00 and 3.00pm, where you'll find a basket in the entrance hall.

The Quiz Night held on 3<sup>rd</sup> November was well supported, and a fun evening was had by all who attended.

The choir has been delighted to welcome new and returning members to the choir. If you are interested in joining, please email Sharron at: [secretary@stoneleighladieschoir.org.uk](mailto:secretary@stoneleighladieschoir.org.uk) for more information. Choir restarts after Christmas on Thursday 11<sup>th</sup> January, when we will be starting a new programme of music, so a good time to join us.



# Stoneleigh Village Club



## COFFEE MORNING

**Thursday**

**December 14th,**

**January 11th, 25th**

**10:00am - 11:30am**

*Come along, enjoy a hot drink  
and catch up with friends.*

*Everyone is welcome!*

*£1 donation*





**Appoint Us**  
SERVICES (MIDLANDS) CIC



For further information  
024 7699 8414

[www.appointuservices.co.uk](http://www.appointuservices.co.uk)

find us on facebook - Appoint Us Services

# Do you know a someone that needs....



- A Mental Capacity Assessment
- A Testamentary Capacity Assessment
- A Certificate Provider
- An Independent Welfare Review
- Advocacy and Support
- Funeral Plans

for further information

**Appoint Us**  
SERVICES (MIDLANDS) CIC

024 7699 8414

[www.appointuservices.co.uk](http://www.appointuservices.co.uk)



# What Sweeter Music

Songs for Christmas  
with Warwickshire Singers

Daley • Elgar • Howells • McGlade • Quartel • Poston • Rutter



**Musical Director: Jim Bate**  
Accompanist: David King

**Saturday 9th December 2023 at 2:30pm**



St Mary the Virgin Church, Church Lane  
Lapworth, Solihull, B94 5NX

**Tickets: £12, under 18s and students £5**

Available at [ticketsource.co.uk/warwickshire-singers](https://ticketsource.co.uk/warwickshire-singers) or on the door

Refreshments after the concert in the Old School Room



SCAN HERE

Proceeds to St Mary's  
Church Organ Fund and  
Warwickshire Singers

Registered Charity Number: 3203526

# Amid the Winter Snow

Songs for Christmas  
with Warwickshire Singers

Daley • McGlade • Quartel • Poston • Rutter • Christmas carols



**Musical Director: Jim Bate**  
Accompanist: David King

**Monday 11th December 2023 at 7:30pm**



Ettington Church, Halford Road  
Ettington, CV37 7TH

**Tickets: £12, under 18s and students £5**

**Includes mulled wine and mince pies**

Available at [ticketsource.co.uk/warwickshire-singers](https://ticketsource.co.uk/warwickshire-singers)

via Phil Knight (07886 126098) or on the door



SCAN HERE

Registered Charity Number: 1200526

# HS2 Update

---

## Martin Smith for the Stoneleigh Action Group against HS2

**T**he key local news is the granting by Warwick District Council's planning committee in November for the compound extension. This comprises the 30 ha (approx) of land between the current compound and the C32, Stoneleigh Road (north of the crossroads), including a new access on to that road.

*W/23/0880 | Full planning permission for the extension of the A46 Main Compound for HS2 construction purposes for a temporary period, including site clearance works, stockpiling of soil, materials storage, security cabins, plant and wheel wash facilities, HGV/plant parking, drainage infrastructure, internal spine and haul roads with access from Stoneleigh Road. | Land south of Stoneleigh Road, Stoneleigh, Warwickshire.*

The intention is that the area will be used for the storage of soil from the excavations and thus it will be kept on site for re-use later, either here or for dispersal along the line of route when that is finally established and linked up. There will also be additional storage areas for materials and for cars/other vehicles, although the application stated that there would be no increase in vehicle movements. The application is granted with some conditions, briefly that:

- There is to be more work required to manage water run-off/attenuate (hold back) a key concern in view of the flooding of water on the Birmingham Road and into the inadequate surface water drains.
- There is an archaeological condition requiring more exploration of the site.
- This is a temporary approval for seven years, after which one assumes the land has to be returned to its original use.

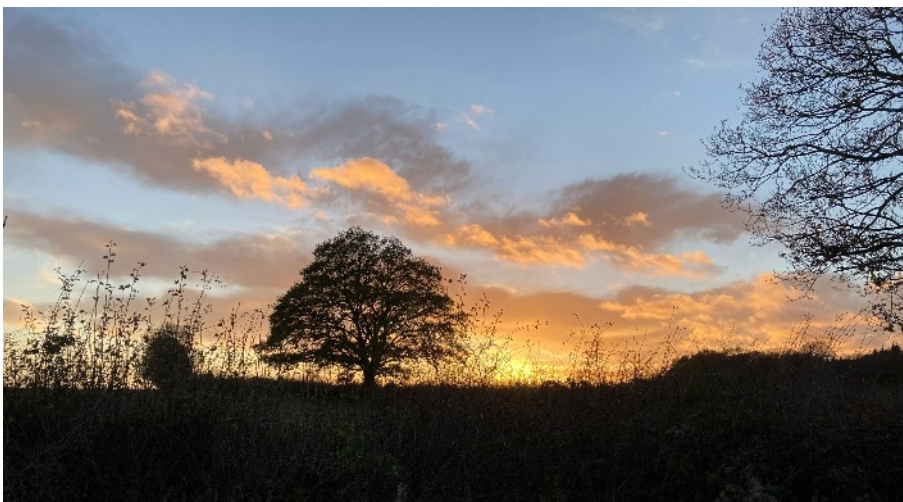
Residents may have been notified by BBV that preliminary exploratory works to the road will start at the end of November for one week, resulting in two-way traffic lights (to add to the growing collection!).

On a more national level, various recent Government pronouncements in short seem to be “rubbishing” the whole HS2 project in favour of more localised initiatives, e.g. better bus routes etc., which many have asked for from the start of this project, instead of this.

(Reference: “Network North: Transforming British Transport” for any who might care to have a look.) It is scant consolation in our area.

<https://assets.publishing.service.gov.uk/media/65290f86697260000dccb78b/network-north-transforming-british-transport-print-version.pdf>

Finally, having just received a letter from Warwickshire County Council regarding the continuing closure of the A46 road bridge until 3<sup>rd</sup> December, using that stretch of road will become even more of a challenge for residents.



## Christmas at Ashow Church

---

**Kate Jones**

**F**rom 10.00am onwards on Saturday 16<sup>th</sup> December, we will be decorating Ashow Church ready for the candlelit carol service (which will take place on Sunday 17<sup>th</sup> December at 4.00pm) and the Christmas services. Everyone is invited to come along and help.

On Christmas Eve at 10.00am, there will be a Christingle Service led by Audrey Rowberry. This service is especially for children. On Christmas Day at 10.00am, all are welcome to come and celebrate Christ's birth.

Everyone at Ashow Church wishes you a very happy Christmas.

# STONELEIGH DEER PARK GOLF CLUB



*"A Beautiful & Friendly Golf Club, with  
27 Holes and Fantastic Facilities"*

**3 MONTHS  
FREE  
MEMBERSHIP  
WHEN JOINING  
BEFORE 31ST  
DECEMBER  
2023**

- ✓ **GREAT MEMBERSHIP BENEFITS**
- ✓ **18 HOLE PAR 71 GOLF COURSE**
- ✓ **9 HOLE PAR 3 COURSE**
- ✓ **PRACTICE AREA**
- ✓ **BAR & RESTAURANT WITH MEMBERS DISCOUNT**
- ✓ **PRE BOOK TEE TIMES IN ADVANCE**
- ✓ **REGULAR SOCIAL EVENTS**

**Monthly Payment Option Available**



**Call NOW 02476 639 991 option 1**

**[www.stoneleighdeerparkgolfclub.com](http://www.stoneleighdeerparkgolfclub.com)**

**Stoneleigh Deer Park Golf Club, Coventry Road, Stoneleigh CV8 3DR**

Made with PosterMyWall.com

# O Come On, All Ye Faithful!

---

Susan Spencer

**T**his year, the Christmas Carol Service at Ashow Church will return to its original time of 4.00pm on Sunday 17<sup>th</sup> December. (If you remember, the Football World Cup interfered with our fun last year and we had a morning service instead.) We call all singers who would like to join our Christmas choir to come to Ashow Church for Thursday evening rehearsals from 7.30pm to 8.30pm on as many of the following dates as you can:

**23<sup>rd</sup> November, 30<sup>th</sup> November, 7<sup>th</sup> December and 14<sup>th</sup> December**

We look forward to singing together again.





STONELEIGH DEER PARK GOLF CLUB

## FOOD SERVED DAILY FROM 9AM

**ALL DAY BREAKFAST, LIGHT BITES & LUNCH AVAILABLE**



### FABULOUS SUNDAY CARVERY

3 COURSE'S & COFFEE EVERY WEEK  
FROM 12.30PM - ONLY £19.95PP  
ADVANCE BOOKING REQUIRED

### EVERYBODY WELCOME

*"STAFF WERE ATTENTIVE, FRIENDLY & PROFESSIONAL"*

## LUNCH & EVENING FUNCTIONS

### BIRTHDAY'S, ANNIVERSARIES & FAMILY GET TOGETHERS

A FANTASTIC SELECTION OF DELICIOUS HOT AND COLD BUFFETS, PLUS SUPERB THREE COURSE SEATED OPTIONS CATERING FOR GROUPS UP TO 130

### FUNERAL RECEPTIONS

THE PERFECT CHOICE FOR CELEBRATING THE LIVES OF YOUR LOVED ONES, CATERING FOR SMALL AND LARGE GROUPS, OFFERING A SELECTION OF BUFFET OR SIT DOWN

### CONTACT ONE OF OUR FRIENDLY TEAM

TEL: 02476 639 991

EMAIL: [INFO@STONELEIGHDEERPARKGOLFCLUB.COM](mailto:INFO@STONELEIGHDEERPARKGOLFCLUB.COM)

[WWW.STONELEIGHDEERPARKGOLFCLUB.COM](http://WWW.STONELEIGHDEERPARKGOLFCLUB.COM)



*"THE FOOD & SERVICE WAS EXCEPTIONAL"*

*"BEST SUNDAY CARVERY EVER"*

*"AWESOME BREAKFAST!"*



COVENTRY ROAD,  
STONELEIGH,  
WARWICKSHIRE CV8 3JR

# Stoneleigh Male Voice Choir News

---

**Philip Jones, Chairman**

**D**ecember is a busy month for the choir. Our Christmas carol concert will take place on Wednesday 6<sup>th</sup> December at 7.00pm in the Stables at Stoneleigh Abbey, when our soloist will be Lucy Morris. Tickets, which are £15 and include a glass of mulled wine and a mince pie, are available from Philip Jones ([kathryngjones@hotmail.co.uk](mailto:kathryngjones@hotmail.co.uk) / 01926 853511 / 07910 240453) or from any other member of the choir. This year, we are supporting Rufus' Friends, a charity based in Leamington which provides support for families with children who have learning difficulties.

On Saturday 16<sup>th</sup> December, the choir has been invited to sing at 'Carols at the Castle', which is organised by Kenilworth Lions. Then on Sunday 17<sup>th</sup> December at 7.00pm, we will be taking part in Stoneleigh Church's carol service.

Thank you to everyone who attended our concert at Kenilworth's United Reformed Church in November. The money raised was shared between The Waverley Day Centre, Kenilworth and the Kenilworth Reading and Visiting Service. The choir and audience were also asked to bring something for Kenilworth Foodbank, who were very grateful for the large amount of goods donated.

If anyone is interested in joining the choir, either come along to one of our rehearsals (which take place on Wednesday evenings at 7.30pm in Stoneleigh Village Hall) or contact Philip Jones for more information (contact details above).

The choir would like to wish everyone a very merry Christmas and a happy New Year.



# Stoneleigh Deer Park Golf Club

*Warwickshire's Hidden Gem*



WINTER GOLF PACKAGE FROM £30.00pp  
18 HOLES ON THE TANTARA COURSE  
STEAK PIE & CHIPS OR HAM, EGG & CHIPS

MONDAY - FRIDAY £30.00pp  
SATURDAY & BANK HOLIDAYS £35.00pp

## RESERVE YOUR TEE TIME NOW!!

BOOK ONLINE: [www.stoneleighdeerparkgolfclub.com](http://www.stoneleighdeerparkgolfclub.com)

EMAIL: [proshopsdpgc@gmail.com](mailto:proshopsdpgc@gmail.com)

CALL: 02476 639 912



## The Leigh Educational Foundation

Are you under 25?

Do you or your parents/guardians live in one of the following Civil Parishes?

- Ashow
- Burton Green
- Leek Wootton & Guy's Cliffe
- Stoneleigh

Do you need funding to support your education or training?

Did you know you can apply to The Leigh Educational Foundation for a grant...



For young people of Stoneleigh, Ashow, Leek Wootton & Guy's Cliffe or Burton Green in Warwickshire

## What do we give grants for?

### **The Leigh Educational Foundation**

has helped and influenced thousands of young people for the better and now grants funds for virtually anything connected with the educational advancement and welfare of young people under the age of 25.

Examples of the type of assistance which can be given include:

- Individual help for school trips, both home and abroad
- Assistance with school uniform/equipment of all kinds
- Help with an individual's School/College/University expenses
- Support for youth groups, teams, Scouts, Guides, Cubs, Brownies and the like

<http://leigheducationalfoundation.org.uk>

# Royal British Legion Poppy Appeal 2023

Kate and Philip Jones

**W**e would like to thank everyone who assisted with this year's Poppy Appeal, the people who sold the poppies, and those who helped to count the money afterwards. We are grateful to Stoneleigh Church for allowing us to use the Leigh Chapel for the count. Without our many helpers, we would not have been able to raise so much money for this worthwhile cause. To date, the amount raised is £2177, with boxes still to be collected and counted. As soon as we know it, the final total will be announced in the Stoneleigh and Ashow Pews News and in the next edition of the parish magazine.



Our youngest helpers, Lila and Finlay, with their grandad, Steve, collecting in Stoneleigh.

**The United Benefice of Stoneleigh with Ashow**

# the **lectio** course

**A five session video series with Pete Greig  
exploring the ancient practice of Lectio Divina.**

**[www.24-7prayer.com/lectiocrse](http://www.24-7prayer.com/lectiocrse)**

**Learning how to hear God is an exciting journey  
for everyone to explore, and the Lectio Course  
is going to help us do just that.**

**Please join us for our course this term:**

**Saturday 2nd December, 10am – Stoneleigh Club**

**Saturday 9th December, 10am – Ashow Club**

**Please note, we will advertise the date for the meeting in  
January later through the Church's Pews News!**

**Each session includes a short video, a discussion guide,  
and a practical activity for the group to explore together.**

**Refreshments will be served!  
Everyone is welcome!**

# Film Night

## SAVE THE DATE

*(Film title will be announced soon!)*

**Friday 2<sup>nd</sup> February 2024**

6.45pm for a 7.00pm showing, Stoneleigh Village Hall

Tickets: £4.00

(to cover room hire and refreshments)

To reserve a place and a pastry, call Jane on 01926 858315  
by Wednesday 31<sup>st</sup> January

*Please bring your own cup and plate.*

*Coffee, tea and a pastries will be served in the interval.*

### FAMILY RUN BUSINESS

**AFFORDABLE  
RATES**

- ✓ High Pressure Jetting
- ✓ CCTV Surveys
- ✓ Internal / External drains
- ✓ Non Excavation technology
- ✓ Fast Response Time
- ✓ All Works Guaranteed
- ✓ Experienced Engineers
- ✓ Fixed Rates Any Day Of The Week

**SENIOR  
CITIZEN  
DISCOUNT**

## CLEARING BLOCKED DRAINS NOW - 24/7

**NO CALL  
OUT CHARGE**

Responsible, experienced & caring  
engineers, that you can trust !!!

**NO  
HIDDEN  
CHARGES**

**THE LOCAL COMPANY**

FOR FRIENDLY AND QUALITY SERVICE GIVE US A CALL !

**TEL : 07368 425663**





# Christmas Card Delivery Service

***Kenilworth,  
Leek Wootton, Hill Wootton,  
Stoneleigh & Ashow***

**Collections from mid November  
at**

**Kenilworth Books  
GDT Automobiles  
Leyes Lane Pharmacy  
Steve Crowe Butchers  
Farthing Gallery & Tearoom**

**+**

**All Saints Church, Leek Wootton  
Stoneleigh Village Club  
Ashow Village Club**

**Last collection Friday 15<sup>th</sup> December**



**40P  
PER  
CARD**

**Also in Talisman Square  
Saturday 2<sup>nd</sup>, 9<sup>th</sup> & 16<sup>th</sup> December  
9.30am – 3.30pm**



**Delivery from Sunday 17<sup>th</sup> December**





**The United Benefice of  
The Assumption of our Lady, Ashow  
and  
St Mary the Virgin, Stoneleigh**



## **Contacts**

### **Priest in Charge:**

Reverend Petrică Bistran 07572 193260

[revpbistran@gmail.com](mailto:revpbistran@gmail.com)

### **Churchwardens – Ashow:**

Kate Jones 01926 853511

Anne Gregory 01926 713066

Peter Shrimpton 024 7509 6477 (Deputy Warden)

### **Churchwardens – Stoneleigh:**

Gordon Gatward 07776 211276

Ashley Toogood 07771 888618

Richard Ashley 07708 097187 (Deputy Warden)

### **Or please contact the Parish Administrator:**

Jackie Cubbitt 024 7641 5506

[stoneleighchurch@hotmail.com](mailto:stoneleighchurch@hotmail.com)

*Office hours: Wednesday 9.00am – 12.00pm, Thursday 9.00am – 1.00pm*

Ashow: <https://www.achurchnearyou.com/church/12954/>

Stoneleigh: <https://www.achurchnearyou.com/church/12964/>



## **From the Registers**



### **Funerals**

*Thursday 26<sup>th</sup> November 2023*

**Betty Hind** – funeral service at Stoneleigh

This edition of **Stoneleigh and Ashow News** was compiled by **Lucy Morris**, who would like to thank all contributors.

The online colour version can be viewed on the Stoneleigh Village Facebook page.

The February 2024 edition will be compiled by

**Jane Taylor**

**jane0891@yahoo.com**

**Copy deadline: 18<sup>th</sup> January 2024**

### **Placing an advertisement in Stoneleigh & Ashow News**

Our page format size is A5. Rates **per annum (10 editions)** are:

<b>Full page</b> (13 x 19cm)	<b>£100</b>
------------------------------	-------------

<b>Half page</b> (13 x 9.5cm)	<b>£50</b>
-------------------------------	------------

<b>Quarter page</b> (portrait or landscape) (6.5 x 9.5cm or 13 x 5cm)	<b>£25</b>
--	------------

Rates for advertising in a **single edition** are:

<b>Full page</b> (1 edition + £10 each extra edition)	<b>£20</b>
---	------------

<b>Half page</b> (1 edition + £5 each extra edition)	<b>£10</b>
--	------------

<b>Quarter page</b> (1 edition + £5 each extra edition)	<b>£10</b>
---	------------

### **How to create your advertisement**

- Create an advertisement that conveys your message and matches your chosen size (see above). We accept the following formats: Word, pdf, jpeg, png. Don't worry too much about exact dimensions; the editor can scale it, if required. If you have a problem with this, please email [bill.crofts@btinternet.com](mailto:bill.crofts@btinternet.com). If you create the ad on something other than Word, it is advisable to save the file as an image (jpeg, png etc.) which is easier for the editor to deal with.
- Email your ad to the Treasurer at [bill.crofts@btinternet.com](mailto:bill.crofts@btinternet.com), stating the size of ad that you would like and which editions you would like it to feature in.
- Deadline for entries is the 18<sup>th</sup> of the month prior to publication, i.e. 18<sup>th</sup> August for September's edition.
- Once received, you'll be invoiced according to your requirements and your ad will be placed with the editor(s) for your chosen editions.
- All advertisements are accepted at the editor's discretion, subject to S&A News policy. Editors reserve the right to edit all contributions.

# Christmas Greetings

---

**Robin Bussell**

Once again, friends and neighbours in Stoneleigh and beyond have made donations to Myton Hospice instead of sending Christmas cards to each other. In recognition of this, I will “fly the flag” over the weekend of 16<sup>th</sup>/17<sup>th</sup> December and list all the contributors on a notice displayed on my gatepost.

**The following wish all our friends and neighbours “a very happy Christmas and a healthy New Year”.**

**Richard and Mary Ashley  
Mike and Pam Baker  
Steve and Val Baker  
Shirley Ball  
Nora Blagburn  
Margaret and Alan Brown  
Jean and Robin Bussell  
Quentin Compton-Bishop and  
Sally Davies  
Viv and Martin Cooper  
Mandy and Pete Freeman  
Jim and Karen Gavin  
Janet and David Gibson  
Judy and Chris Hadfield  
Ann Harris**

**Ann Lowe and Jules Storer  
Marian Murray  
Richard and Janet Parham  
Janet and Alec Sanders  
Tim and Nicky Sawdon  
Patrick Sawdon  
Pete and Jackie Sibley  
Kim and Martin Smith  
Joan Storer  
Liz Sykes  
Jean Vaughan  
Margaret and Ken Wallis  
Gill and Clive Watson  
Simon White  
Shel Whitfield  
Sheila Woolf**

Thank you for your generous donations for Myton Hospice which, I know, will be gratefully received. The total raised, with a few donations still to come, is £415. If you have missed the deadline for this notice, you can still donate and I will acknowledge it when I fly the flag.

**Have a very happy Christmas**





**The United Benefice of  
The Assumption of our Lady, Ashow  
and  
St Mary the Virgin, Stoneleigh**



## **Services for December 2023 & January 2024**

### **December 2023**

Sunday 3 <sup>rd</sup>	11.00am	United Holy Communion Service – Ashow
Sunday 10 <sup>th</sup>	9.30am	Holy Communion Service – Ashow
	11.00am	Morning Praise Service – Stoneleigh
Sunday 17 <sup>th</sup>	9.30am	Celtic Service – Ashow
	4.00pm	Christmas Carol Service – Ashow
	7.00pm	Christmas Carol Service – Stoneleigh
Sunday 24 <sup>th</sup>	<b>Christmas Eve</b>	
	10.00am	Christingle Service – Ashow
	3.00pm	Crib Service – Stoneleigh
	11.30pm	Holy Communion Service – Stoneleigh
Monday 25 <sup>th</sup>	<b>Christmas Day</b>	
	10.00am	United Holy Communion Service – Ashow
Sunday 31 <sup>st</sup>	11.00am	United Holy Communion Service – Stoneleigh

### **January 2024**

Sunday 7 <sup>th</sup>	10.00am	United Holy Communion Service – Ashow
Sunday 14 <sup>th</sup>	9.30am	Holy Communion Service – Ashow
	11.00am	Morning Praise Service – Stoneleigh
Sunday 21 <sup>st</sup>	9.30am	Celtic Service – Ashow
	11.00am	Celtic Holy Communion Service – Stoneleigh
Sunday 28 <sup>th</sup>	9.30am	Village Service – Ashow
	11.00am	Holy Communion Service – Stoneleigh