

# Stoneleigh & Ashow *News*



**December 2020**  
**January 2021**

# Stoneleigh & Ashow News Update

---

We're still here!

**H**ave you been missing the paper version of your monthly *Stoneleigh & Ashow News*? You may have noticed this loss to your letterbox, but of course the *News* has been available to read on the [village website](#) and on the [Stoneleigh village Facebook page](#) – which is where you might be reading this now! We are sorry that people without internet access have missed out on this important source of information in recent months. An explanation follows:

Sadly, we have had to concede that, owing to COVID-19 and associated restrictions and uncertainty, it presently seems no longer viable to produce and distribute a paper copy of *Stoneleigh & Ashow News*. So, for the foreseeable future, the volunteer team of editors will continue to assemble the magazine each month and publish it, but only online.

However, there are some points that we would like you to be aware of:

## 1. Online Access

If you wish to read a copy of *Stoneleigh & Ashow News*, and have internet access, you can view it at <http://www.stoneleighvillage.org.uk/>. Note that this website includes the current month's edition and also previous editions. You can also read it via the Stoneleigh village Facebook page – <https://www.facebook.com/groups/602824336963204%22>.

## 2. No Online Access

If you are a friend or neighbour of someone who does **not** have online access, perhaps you could offer to print a copy for them or, if you have a laptop or tablet, load the *News* on to it and (if COVID restrictions allow) offer to pop round once a month to let them read it.

## 3. Donations

If you have normally made a donation, we are most grateful, but **please do not make any further donations** for the foreseeable future. As we do not currently have any printing costs (our main expense), we would not want you to make unnecessary donations.

**Please do not send any cheques and, if you have set up a bank standing order, please cancel it.** We have a sufficient reserve of funds to enable us to undertake minor operational expenses for the foreseeable future.

We hope that this has clarified the situation for you. We very much regret that the disruption to the production of the *News* has been one of the many unintended consequences of COVID-19.

Best wishes,

*Margaret Wallis*, [mswallis1@gmail.com](mailto:mswallis1@gmail.com)  
(News Co-ordinator)

*Bill Crofts*, [W.E.Crofts@Warwick.ac.uk](mailto:W.E.Crofts@Warwick.ac.uk)  
(News Treasurer)

*Sheila Woolf*, [shewoolf@hotmail.co.uk](mailto:shewoolf@hotmail.co.uk)  
(Website Manager and Village Facebook Page Manager)



---

J.L.Huthwaite



Property Maintenance Ltd

[jayhuthwaite1@sky.com](mailto:jayhuthwaite1@sky.com)  
07921 842217 024 7501 1320

---

Roofing - Guttering - Lead - Chimney Repairs  
Painting - Decorating - Wallpapering - Coving  
Skirting Boards - Architraves - Doors  
Laminate Flooring - Floor - Wall Tiling  
Garden Maintenance - Patios - Landscaping  
Wall Repairs & Pointing... And More  
—FOR A FREE NO OBLIGATIONS QUOTE—  
—CALL TODAY—  
—NO JOB TOO SMALL—

---

**“The Heart of Stoneleigh” defibrillator in the phone box on The Green**

**Co-ordinator: David Ellwood 07785 284482 text if no reply**

**Trained volunteers:**

John Churchley .....	07885 496795	Laura Elliot .....	07738 222969
David Ellwood .....	07785 284482	Richard Hancox .....	07596 276829
Ian Huston .....	07974 237331	Sharron McEldowney ..	07760 101775
Claire Neale .....	07557 675842	Lisa Reay .....	07716 416320
Martin Smith .....	07958 955629	Mary Taylor .....	07890 535506

**Remember: Always ring 999 first!**



## **Poppy Appeal 2020**

**Kate & Philip Jones**

**A** wonderful total of £2367.64 from the sale of poppies was raised this year. Thank you to everyone who supported the British Legion in these trying times.

We are grateful to the churchwardens of Stoneleigh who allowed us to use the church to count the money in a socially-distanced environment. Special thanks to Sheila Woolf, Dennis Craddock, and Jackie and Pete Sibley for assisting at the count, and thanks too for their help and advice which was so useful as this was the first time that we had organised the Poppy Appeal.

The money raised will be used by the British Legion to support so many people.

# Christmas Message

---

**June Burr, Gordon Gatward & Kate Jones**  
on behalf of Stoneleigh & Ashow Churches

**C**rackers, candles, Christmas trees, carols, crib and the Christ Child; once more it is Christmas.

How quickly it has come round again! It seems like only yesterday that we were writing last year's message. So much, and yet so little, has happened. Last Christmas, our Priest-in-Charge was away ill. We have been in interregnum again since March, wondering then whether things could get much worse! Well, they did – very quickly! COVID came and life changed. Churches closed, then opened with strict restrictions and social distancing. At the time of writing, we are now in our second lockdown and churches are once again closed.

HOWEVER, worship hasn't ceased! We've held services outside in the summer and enjoyed the wonders of nature all around us. Our two church communities have grown closer. Our fellowship has strengthened as we have reached out to one another and the wider community. We've been there to support one another. We have laughed together in happy times and cried together in sad times. Above all, we have prayed together. There is now a glimmer of light at the end of the tunnel.

All the darkness in the universe cannot put out the light of one small candle! So, we light our Christmas candles and Christmas trees, in readiness to celebrate this wonderful festival of light.

We wish you a happy, joyful and blessed Christmas.



# Church Service Information

## Stoneleigh Church

**June Burr, Churchwarden**

**Saturday 11<sup>th</sup> December    Christmas tree decorating**  
**12.00pm – 2.30pm**

*Do come along on Saturday 12<sup>th</sup> December to help decorate the tree in the church. Due to the need for social distancing, if you are able to come, please let us know by calling 024 7622 7726.*

**Sunday 20<sup>th</sup> December    Christmas Celebration**  
**6.00pm**

*This service will take place in the churchyard and will last approximately 30 minutes (maximum 40 minutes). It will be instead of our usual carol service, which cannot be held because of COVID restrictions. It will be lovely, **BUT** do dress warmly and bring torches or lanterns.*

**Christmas Eve    A Christmas Visit**  
**2.00pm – 4.00pm**

*This will be instead of our usual crib service, which cannot be held due to COVID restrictions. Children and families are invited to come along to see the decorated church and the crib (and other surprises!).*



# Church Service Information

## Ashow Church

**Kate Jones, Churchwarden**

**Sunday 20<sup>th</sup> December**

### **Celebration of Christmas**

**2.30pm**

*This service will be led by the Rev Robert Langton and will take place outside in the churchyard. It will last no more than 30 minutes. Do please dress warmly and, if you have a lantern, please bring it along with you.*

**Christmas Day**

### **Holy Communion**

**10.00am**

*On Christmas morning, we are hoping to hold a service of holy communion, but as yet nothing can be finalised because we will need to consider the latest church and Government guidelines. Please check the village website for any changes to this service.*

In previous years, on the Saturday before the carol service, the poles in the pews and the Christmas tree have been decorated. This year, due to COVID restrictions, there will be no decorated poles or Christmas tree inside the church. Instead, a smaller tree will be placed outside and there will be some floral decorations inside.



# Stoneleigh History Society

---

Sheila Woolf

**O**ur October meeting was a Zoom presentation by Sheila Woolf on the background to her recently-published book, *The Eagle and the Phoenix, Coventry Stories for Young People*. Although Zoom presents its own challenges, we are growing used to this format and it was good to see so many participants at the meeting.

Similarly, our November meeting was well-attended, and was the first we have held using an outside speaker. We have yet to decide on how to organise a Christmas social via Zoom, but no doubt we shall think of something!

We look forward to 2021, which will be our tenth anniversary. We had hoped to put together a number of events to celebrate this milestone, but at the time of writing the uncertainty surrounding COVID-19 means that, like everyone else, we will have to see what the future brings – an interesting thought for historians!

## Ashow Village Pumpkin Competition 2020

---



Tony Gregory, Club Steward

**T**he entries for the Ashow pumpkin competition this year were impressive! Our 2020 winners were John and Zoe Haywood, whose pumpkin weighed in at 96lbs. All entries were seeds grown from the winning pumpkin of 2018. The event took place in the Club marquee (all socially-distanced, of course) and was well-attended.

Hopefully, next year we will be able to hold the event again, but in normal circumstances. Thank you to all those who took part and allowed the pumpkin plants to take over their gardens during the summer months!



# Sydney George Creed

11<sup>th</sup> June 1928 – 30<sup>th</sup> October 2020

---

Sarah Ballinger



**S**yd died peacefully in his sleep after a short illness at Avalon Court Care Home, where he had moved with Eileen in the summer. A small funeral with family and close friends took place on 25<sup>th</sup> November 2020 at Stoneleigh Church.

Even though it had been a number of years since Syd and Eileen had lived in Stoneleigh, Syd had a great fondness for the village, and St Mary the Virgin was still his spiritual home.

We would like to thank everyone for their cards and good wishes.

He will be missed greatly by those who knew him, but we can all take comfort in knowing that he led a long, full and happy life.

# Flying Christmas Greetings

---

Robin Bussell

**U**nder the present difficult circumstances, it is sometimes tricky to remember what day it is, let alone to remember a task that arises only on an annual basis. Anyway, that is my excuse for forgetting to put my usual “Christmas Flag Flying Notice” in the November issue of the News!

I’m sure readers will be aware that I have, for many years, flown the flag at Christmas to signify local Christmas greetings in place of sending cards to each other. In return, I receive donations which I give to a local good cause. Last year, I sent £706 to Myton Hospice.

I will fly the flag over the weekend of 18<sup>th</sup> to 20<sup>th</sup> December and will display the names of those who wish to pass their Christmas greeting to friends and neighbours. Donations will once again be given to Myton Hospice – we are all aware that all organisations that rely on public generosity are experiencing very difficult times – so I’m sure you will be generous.

To be included, please email me at [robin.bussell44@btinternet.com](mailto:robin.bussell44@btinternet.com), telephone 024 7641 6183 or text 07443 226425. I can receive donations to The Oaks, Vicarage Road, Stoneleigh CV8 3DH by cheque (payable to “Myton Hospice”), in cash or by bank transfer (please call for account details).

In the meantime, stay safe.



This month’s front cover:

**Toadstool**

Photograph by Lucy Morris



# Light Up To Cheer Up

Many of us have been struck by the resilience and commitment of healthcare professionals and key workers who have been so vital in these difficult times, all of whom are having to dig deep at the moment as they continue to deal with the effects of the ongoing pandemic. Morale must be at an all-time low.

Back in the summer, we clapped for the NHS. Perhaps this winter, we could think about lighting up our villages for the NHS and all key workers? It could be lots of fairy lights on a tree or might simply be a candle in a window. By lighting up our homes, we could show solidarity with our wonderful healthcare providers and key workers. Wouldn't it be lovely if everybody could get involved, however big or small their light display?

*If you'd like to take part, please light up to cheer up at 7.00pm on 1<sup>st</sup> December. Thank you!*

*Gill Watson*



# HS2 Update

---

**Margaret Wallis on behalf of Stoneleigh Action Group (against HS2)**

**R**esidents have continued to notice signs of HS2-associated work/desecration around us. The media continues to be fascinated by the sad tales of ancient trees being felled (e.g. the Cubbingon pear tree), and by the ongoing controversies about escalating costs, routes, general disruption and disregard for local issues and promises.

Locally, concern remains over Laing Murphy's and BBV's proposed plans for work associated with the access to the compound on the B4115 Ashow Road and the possibility that this will become one-way. The Parish Council has objected to many aspects of the proposals; it is hoped that further clarification will be given at a meeting scheduled for 3<sup>rd</sup> December. (See also the Parish Council item on pages 18 and 19.)

The preferred solution is that access to the new compound is from the A46 150m south on Stoneleigh Road. Due to the failure of HS2 Ltd to negotiate the purchase of the 350m x 100m strip of land from the owners, they are facing problems which are being worked on by our MP, Jeremy Wright, and our PC representative, Anthony Bianco, at ministerial level.

Whatever the final decision, Stoneleigh and Ashow residents' access to Kenilworth (and elsewhere) will be restricted due to these works and those connected with the A46 roundabout, and everyone will be affected by increased traffic movements and noise from the site.

Some good news is that a consultative planning application for the B4115 Crewe Lane to the Stoneleigh crossroads project was issued on 11<sup>th</sup> November, including the site plan and bridge data. The PC and others will be responding by 30<sup>th</sup> November.

The village truck watch team have now submitted a further report of illegal movements, not all of which are associated with HS2. Action has been taken by LM and WCC and similar co-operation will be requested from BBV.

If anyone is in any doubt about the impact of HS2 on the countryside, drive towards the Fosse Way through Offchurch. Heartbreaking.

# Stoneleigh Community Orchard CIC Update

---

Pete Freeman

**A**s this extraordinary and unforgettable year draws to a close, it is worth noting that, as the Orchard project started in 2011, this coming year will be its tenth anniversary. This must surely mark a point in which the group can reflect on what has been achieved, where we've come from, as well as where our future lies?

It is pleasing to observe how successful the Orchard has been on so many levels. That said, the Orchard Group will not be resting on its laurels. We will continually strive to seek new impetus and bring fresh ideas to the table, in addition to considering how to extend and diversify the options surrounding this resource. The group will also be considering how to distribute profits among the good causes of the local community. One possibility to be discussed may be funding a project to re-introduce disease-resistant elm trees into the countryside surrounding Stoneleigh. One cannot fail to observe the trauma inflicted on our local countryside of late, so such a project may go a small way to replenish the area.

Given the above, a period of discussion (not to mention consultation) within a broader forum will surely result. We will report and feed back on this in the March 2021 edition of the Stoneleigh & Ashow News.

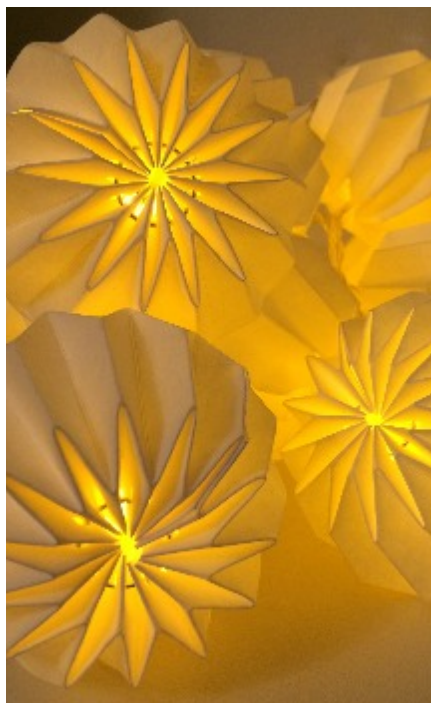
It has long been an ambition of the Orchard Group to bring younger generations into its fold as, above all, they mark the future for this resource and will undoubtedly possess fresh energy and new ideas. So, let me challenge a younger demographic to join in 2021 and to simply get involved. From experience, there is indeed so much to learn through these sorts of groups and activities.

Those readers who follow the group will have noted that, in recent years, we have introduced the tradition of wassailing the Orchard on Twelfth Night in the company of the Coventry Mummers. Given the rules surrounding COVID-19, we may unfortunately have to cancel this event for 2021, but I have no doubt that this event will return even stronger in the years to come!

Finally, on behalf of the Orchard Group, I would like to wish everyone season's greetings and a happy new year!

Orchard Friends' subscriptions and yearly renewals for 2021 will cost £10 and can be made to Pete Freeman as Chairman or to Richard Hancox as Treasurer. Cheques should be made payable to Stoneleigh Village Community Orchard. Alternatively, why not become a long-term Friend and set up a direct debit?

Contact:            Pete Freeman (Chairman)  
                         5 Church Lane, Stoneleigh  
                         **[pete.freeman@swft.nhs.uk](mailto:pete.freeman@swft.nhs.uk)**  
  
                         Richard Hancox (Treasurer)  
                         **[richard.hancox@highwaysengland.co.uk](mailto:richard.hancox@highwaysengland.co.uk)**



**A. Cadby Electrical**

All domestic and light commercial electrical work undertaken. For a qualified and insured electrician **call Andy on 07826 319801.**

**E:** [info@acadbyelectrical.co.uk](mailto:info@acadbyelectrical.co.uk)  
**W:** [www.acadbyelectrical.co.uk](http://www.acadbyelectrical.co.uk)



# Thank You

---

## Janet Bowkett

I wish to thank all the people in the village for their gift of flowers, many cards of condolence, offers of help with shopping, and even a wave through the window. It has made me feel that I am not alone.

Layton loved living in Ashow; he said it was like a family, which meant so much to him.

Thank you to all those who gave him a wonderful send-off. It meant a lot to me.

## Thomas Layton Bowkett

16th September 1927 – 6th October 2020

---

Layton was born in Coventry – a true ‘Coventry kid’. He attended King Henry VIII School, having been awarded a scholarship. He went on to excel at school, especially in the subject of Latin; his school masters felt he could have attended Oxford University. However, his father said that he could not go to Oxford, and that he should get a job!

Layton had to walk the streets of Coventry to find a job and he found a position at Mattersons, steel fabricators. After a while working there, he was told the company was going to move. Layton did not want to do that, so Layton and a friend called Sid Emery decided to go it alone. They found a place in Hunningham for a factory and, with the help of Barclays Bank and two silent ‘backers’ whom Layton had met at Coventry Aeroplane Club, set up a business called Emery and Bowkett. This company dealt with construction and fabrication engineering. Initially, they purchased two large sheds, which they put together to use as their office. Unfortunately, Sid passed away. His wife asked Layton if would he employ their son, Ian, and Layton said yes, so Ian joined the firm. The company was doing really well, especially as Layton had secured a contract with Rolls Royce at Ansty. Through this, they were able to pay back their loans to the initial backers. They were also able to build a permanent office.

During the early 1980s, the country faced a recession and Rolls Royce were in trouble. Layton was concerned that this would affect his company. Rolls Royce went on to become privatised in 1987 by the Conservative Government at the time, Margaret Thatcher being Prime Minister. This taught Layton, as he later told Janet, 'not to keep all your eggs in the one basket'. Over the years, Layton built up good relationships with his contracts and was well respected and trusted. Ian had worked for Layton for a good period of time, but wanted a new challenge. Layton decided shortly after this that he was going to sell the company and retire. He was 63 years of age.

Layton's first wife died at the age of 51 and his two sons from this marriage have also since passed away.

Layton went on to meet Janet and, after a while, they moved from Coventry to Ashow. They were married for 36 years and Layton said that those years were the best years of his life and that he would never leave Ashow. He loved Janet's family, her son Andrew and daughter Jane, along with their children and grandchildren. He used to look forward to their visits and he classed the Ashow community as his extended family.

Layton's hobbies included horse racing, which he loved very much, and he loved his garden. He passed away on Tuesday 6<sup>th</sup> October 2020 and will be so missed by Janet and all his family and friends.







# Let us buzz on in!

## HoneyBee HomeCare

Care Comes Naturally

HoneyBee HomeCare, founded by a resident of Stoneleigh; is a care company that puts emphasis on the word "care".

From our clients, to their family, to our staff: we aim to look after everyone involved with our company at any opportunity we can get.

To ensure that our clients get the best care possible, we start by making sure we are the best care company to work for by treating our staff like family and paying them well!

We give our staff thorough training so they are confident in every aspect of their role in our clients' lives.

Our carers also take pride in getting to know our clients' families and friends as their social life plays a big part in maintaining their care & well-being.

If you're interested or have any further questions, don't hesitate to get in touch!

tel: 01926 428509

E-mail:  
[Jess@honeybeehc.co.uk](mailto:Jess@honeybeehc.co.uk)

web:  
[www.honeybeehc.co.uk](http://www.honeybeehc.co.uk)



# Parish Council Notes

---

Hannah Watts, Parish Clerk

## Meetings

Because of the current social distancing requirements, Parish Council meetings are being held online, via Zoom. Residents are still welcome to attend (you do not need to have a Zoom account to join); simply email the Clerk at [stoneleighshowparishcouncil@gmail.com](mailto:stoneleighshowparishcouncil@gmail.com) to request a link before midday on the day of the meeting. Please also note that, for now, all information relating to meetings will be on the website only. No information will be posted on the village noticeboards.

The next meeting will be on **Thursday 10<sup>th</sup> December 2020 at 7.00pm.**

To view the full details of this and other meetings, including upcoming planning applications, please visit the Parish Council website: <http://stoneleighshowparishcouncil.btck.co.uk/CouncilMeetings>.

At the November meeting, we were joined by representatives from LM, the early works contractor for HS2, to discuss proposed road changes to enable HS2 commercial vehicles to access the compound on the B4115. The presentation from LM focused on their main option, which will be to make alterations to the Chesford Grange junction to enable the vehicles to more easily turn on to the B4115, and to potentially make the section of the B4115 between the A452 and the HS2 compound a one-way road. The planned works on the road will result in sections of the B4115 between the A452 and the HS2 compound being subject to three- to four-week closures, although LM did confirm that Ashow residents would be able to go through the traffic management systems to access their properties.

The councillors were surprised and angry to see that changing a significant section of the B4115 to a one-way road appears to be the only option that is being seriously considered by LM and HS2, rather than a number of less disruptive alternatives that have been put forward. The Parish Council made it clear that it strongly opposes this option, and will continue to do so with energy and determination. Councillors will continue to meet with

representatives from LM and HS2 to hold them to account for their decisions and to ensure that residents' voices are heard in this project, which will have a significant impact on all those living and working in the area. More information about this can be found on the PC website on the minutes from the meeting.

It was agreed at the meeting that the Parish Council should go ahead with replacing the posts and chains on the triangle junction of Birmingham Road and Coventry Road. If you have any questions, please contact the Clerk at [stoneleighshowparishcouncil@gmail.com](mailto:stoneleighshowparishcouncil@gmail.com).

In the December meeting, we are expecting Adrian Hart and his colleagues from Warwickshire County Council to join us to talk about the plans for the proposed closure of the Birmingham Road. We are also expecting to hear a presentation from WCC regarding the plans for the A46 strategic link road.

Minutes of all meetings are available on the Parish Council website.

Information about COVID-19 is changing quickly, and we are keeping our Facebook page up-to-date with the latest developments. Don't forget to check out the [Parish Council website](#), which is regularly updated with local information such as road and traffic issues, HS2 updates and local consultations. It's a great way to find out what's going on locally and get involved. You can find us at:

<http://stoneleighshowparishcouncil.btck.co.uk/>.

You can also keep up-to-date by joining the Parish Council Facebook page: <https://www.facebook.com/Stoneleigh-and-Ashow-Parish-Council-753089554863070/>



# Stoneleigh Ladies' Choir

Pat Wightman

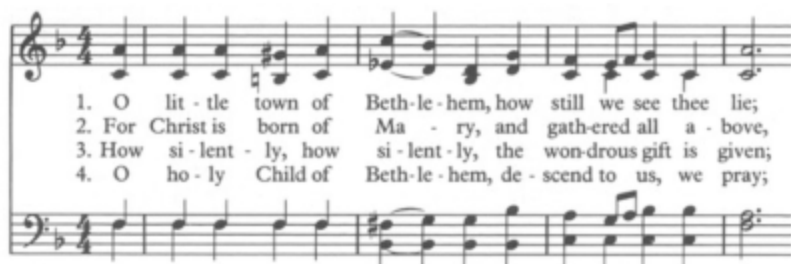
Usually at this time of year, the Choir has prepared Christmas music in readiness for a performance at the University Hospital at Walsgrave and for the Stoneleigh Village Church carol service. Of course, this won't be happening this year, but a solution has been found in video recordings from last year which hopefully will be played in the atrium entrance at the hospital and in the village church.

Happily, the number of Choir members attending the Zoom meetings on Thursday has been maintained, and the general feeling is that we have attained a good balance of singing and socialising online.

Tickets for the Lucky Number Draw are going exceedingly well and, thanks to everyone who's taken part, it looks like the target of £500 raised for Safeline will be achieved. The draw will take place on 10<sup>th</sup> December so, if you are really quick, you can get a number from any member of the Choir or from Val Baker on [bakersvdn@talktalk.net](mailto:bakersvdn@talktalk.net) or telephone 024 7641 4360. There are 30 incredible prizes donated from local businesses, and the Choir would like to thank all of them for their generosity.

The AGM took place on 22<sup>nd</sup> October via Zoom, during which one or two changes were made to the constitution. It was agreed that the committee would remain unchanged to maintain continuity during this difficult period.

Some of the ladies are hoping to join with the men's Choir via Zoom for their singalong on 9<sup>th</sup> December.



# Stoneleigh Village Club Update

[www.facebook.com/stoneleighvillageclub](http://www.facebook.com/stoneleighvillageclub)  
[stoneleigh.villageclub@gmail.com](mailto:stoneleigh.villageclub@gmail.com)

Est 1856



## Current Opening Hours

Club closed until 3<sup>rd</sup> December

### Re-opening Hours (subject to change)



Monday	Closed
Tuesday	6.30pm – 9.30pm
Wednesday	6.30pm – 9.30pm
Thursday	6.30pm – 9.30pm
Friday	4.00pm – 9.30pm
Saturday	2.00pm – 9.30pm
Sunday	12.00pm – 6.30pm

*These opening times may be subject to change. Changes will be communicated to Club members by email and Facebook.*

The festive season will soon be upon us. In these challenging times, it is very difficult to plan in advance any of our usual events from Christmas and New Year parties to the Boxing Day Mummers play. We will keep the membership informed of developments via email and Facebook.

The anticipated opening hours over the Christmas and New Year period are:



Christmas Eve	3.00pm – 11.00pm
Christmas Day	11.00am – 2.00pm
Boxing Day	11.00am – 7.00pm
New Year's Eve	7.00pm – 1.00am

Vicarage Road, Stoneleigh, Warwickshire CV8 3DH 024 7641 4440  
Stoneleigh Village Club Ltd. Registered in England No 8560869

Christmas Day and Boxing Day are traditionally very busy in the Club. We will be looking to roll out a table-booking system on these days to ensure that we can accommodate everyone whilst complying with the Government rules and keeping everyone safe. Details we will be emailed out and posters will be on display in the Club.

We are constantly reviewing our COVID guidelines, in line with Government advice, and thank you all for following the guidance and helping to keep everyone safe and our Club open.

## **Face Coverings and Track & Trace Requirements**

Prior to entering the second lockdown, the “Tier 1” rules were:

- All members and guests are required to wear a face covering on entry to the Club and once inside whenever they are not seated.
- Please remember to track and trace and sanitise on your way in. We have a QR code that can be scanned, as well as paper slips that should be completed and placed in the box.
- Please wait for the bar person to take your drinks order.
- The “rule of six” currently applies and should be adhered to.
- Smoking is only permitted in the smoking area. Please refrain from smoking outside the front of the Club and also by the back door.
- Children are very welcome. However, they must be supervised by an adult at all times and seated at a table.
- Please do not sit or stand at the bar. Tables, chairs and stools have been positioned for your and everybody else’s safety.

**From the committee and the staff at Stoneleigh Village Club, we wish everyone a very happy Christmas. Stay safe all.**

*Don't forget we have Sky Sports showing all the latest sports fixtures!*

Vicarage Road, Stoneleigh, Warwickshire CV8 3DH 024 7641 4440  
Stoneleigh Village Club Ltd. Registered in England No 8560869

# Stoneleigh Male Voice Choir News

---

Phil Jones, Chairman

**I**n spite of lockdown, the Choir is still practising each week via Zoom. On 11<sup>th</sup> November, Armistice Day, we held a short concert featuring songs from the First and Second World Wars, which included a short service of remembrance ,which was very moving.

December will be a busy time for the Choir. On 9<sup>th</sup> December, we will be holding an evening of carols interspersed with readings and prayers. I am delighted that members of the Stoneleigh Ladies' Choir will be joining us. Following that, on 16<sup>th</sup> December, the Choir (festively dressed) will be taking part in a Christmas quiz which will round off 2020 with some festive cheer.

It has been a strange year and many of our usual activities have had to be cancelled. Hopefully, things will improve next year and, at some point, the Choir will resume rehearsals in the hall and start planning future events.

The members of the SMVC wish everyone a very merry Christmas and every good wish for the new year.





**The United Benefice of  
The Assumption of our Lady, Ashow  
and  
St Mary the Virgin, Stoneleigh**



## **Contacts**

### **Ashow**

Churchwarden: Kate Jones 01926 853511

Deputy Wardens: Anne Gregory 01926 717084 /  
Peter Shrimpton 01926 859404

### **Stoneleigh**

Churchwardens: June Burr 024 7622 7726

Gordon Gatward 01926 512528

Deputy Warden: Richard Ashley 01926 427729

### **Or please contact the Parish Administrator:**

Jackie Cubbitt 024 7641 5506

**admin@stoneleighchurch.co.uk**

*Office hours: Wednesday 9.00am – 12.00pm, Thursday 9.00am – 1.00pm*

Ashow: **[www.achurchnearyou.com/church/12954/benefice/](http://www.achurchnearyou.com/church/12954/benefice/)**

Stoneleigh: **[www.achurchnearyou.com/church/12964/benefice/](http://www.achurchnearyou.com/church/12964/benefice/)**



## **From the Registers**



### **Funerals**

Tuesday 27<sup>th</sup> October 2020

**Handel Rex** – interment at Stoneleigh

Wednesday 28<sup>th</sup> October 2020

**Layton Bowkett** – funeral service at Ashow

Monday 2<sup>nd</sup> November 2020

**Baby Theodore Leung** – interment at Stoneleigh



This edition of **Stoneleigh and Ashow News** was compiled by **Lucy Morris**, who would like to thank all contributors.

The February 2021 edition will be compiled by

**Jane Taylor**

**jane0891@yahoo.com**

**Copy deadline: 18<sup>th</sup> January 2021**

We prefer digital A5 copy, but paper copy may also be submitted.

### **Placing an advertisement in Stoneleigh & Ashow News**

Our page format size is A5. Rates **per annum (10 editions)** are:

<b>Full page</b> (13 x 19cm)	<b>£100</b>
<b>Half page</b> (13 x 9.5cm)	<b>£50</b>
<b>Quarter page</b> (portrait or landscape) (6.5 x 9.5cm or 13 x 5cm)	<b>£25</b>

Rates for advertising in a **single edition** are:

<b>Full page</b>	<b>£40</b>
<b>Half page</b>	<b>£20</b>
<b>Quarter page</b>	<b>£10</b>

### **How to create your advertisement**

- Create an advertisement to match your chosen size (see above). We accept the following formats: Word, pdf, jpeg, png. Don't worry too much about exact dimensions; the editor can scale it, if required.
- Email your ad to the Treasurer at **w.e.crofts@warwick.ac.uk**, stating:
  - Size of ad that you would like
  - Number of editions in which you would like it to feature
- Deadline for entries is the 18<sup>th</sup> of the month prior to publication, i.e. 18<sup>th</sup> April for May's edition.
- Once received, you'll be invoiced according to your requirements and your ad will be placed with the editor(s) of your chosen editions.
- All advertisements are accepted at the editor's discretion, subject to S&A News policy. Editors reserve the right to edit all contributions.



**The United Benefice of  
The Assumption of our Lady, Ashow  
and  
St Mary the Virgin, Stoneleigh**



**Services for December 2020**

Sunday 6 <sup>th</sup>	11.00am	United Holy Communion – Stoneleigh
Sunday 13 <sup>th</sup>	10.30am	Holy Communion – Ashow
	11.00am	Holy Communion – Stoneleigh
Sunday 20 <sup>th</sup>	2.30pm	A Celebration of Christmas * – outdoors at Ashow
	6.00pm	Christmas Celebration * – outdoors at Stoneleigh

*Christmas Eve:*

Thursday 24 <sup>th</sup>	2.00pm	A Christmas Visit – Stoneleigh *
	11.30pm	Midnight Mass – Stoneleigh

*Christmas Day:*

Friday 25 <sup>th</sup>	10.00am	United Christmas Day Service – Ashow
Sunday 27 <sup>th</sup>	No services	

*\* See pages 6 & 7 for more details*

Please note it is hoped that these services will continue as planned, but all are subject to possible change in these difficult times. For January 2021 services, please refer to the Stoneleigh and Ashow websites, as well as <https://www.achurchnearyou.com/>.

