

# Stoneleigh & Ashow *News*



**July / August 2018**

# Ashow Church and Village News

---

Stephen Harvey

**A**s this edition of the Stoneleigh and Ashow News magazine covers both July and August, we would like to advertise the Ashow Village Pig Roast on Sunday 26<sup>th</sup> August (Bank Holiday weekend), which is being organised by Ashow Church PCC in conjunction with the Village Club. It will be held in the Club garden at 12.30pm for 1.00pm. Tickets are £17.50 for adults or £6 for children under 12 years. There will be a vegetarian option for those who wish to pre-order, and the meal will include salads and a selection of delicious puddings. There will be games for children of all ages during the afternoon, and marquees and gazebos to protect against too much sun (or inclement weather).

In due course, tickets will be available from Stephen Harvey (01926 852543), Tony Gregory (Club Steward, 01926 717084) or Kate Jones (01926 853511) or email Stephen at **[stephen.harvey@doctors.org.uk](mailto:stephen.harvey@doctors.org.uk)**.

Just a reminder to all of Ashow Club opening times during the summer months. It will be open and the bar “manned” on:

Sunday lunchtimes	12.00pm – 2.30pm
Sunday evenings	8.30pm – 11.00pm
Tuesday evenings	6.00pm – 8.30pm
Friday evenings	6.00pm – 10.00pm
Bank Holiday Monday	12.00pm – 2.30pm



This month's front cover:

**The Ashow Map**

Photograph by Lucy Morris

# DUCK RACE & VILLAGE FETE

Saturday 18<sup>th</sup> August 2018



*This year we are planning an even BIGGER event with bouncy castles, a vintage tearoom and various eating options, in addition to our usual fully-stocked bar, tombola, and stalls from local traders. Be sure to mark it on your calendar and invite your family and friends. To make the event a success, we are seeking volunteers to help before, during and after the day. This event relies solely on the generosity of volunteers' time and efforts. Please offer your help to [stoneleigh.villageclub@gmail.com](mailto:stoneleigh.villageclub@gmail.com) or sign up at the bar. Thank you.!*

## Your duck race needs YOU!



### From the Registers



#### Funerals

Wednesday 23<sup>rd</sup> May 2018

**Joyce Cridland** – funeral service at Canley Crematorium

#### Weddings

Saturday 28<sup>th</sup> May 2018

**Matthew Gordon Horne to Emma Jane Carroll** – Stoneleigh

# Film Night



**Friday 13<sup>th</sup> July 2018**

**6.45pm for 7.00pm, Stoneleigh Village Hall**

**Tickets: £3.00**

**(to cover room hire and refreshments)**

**To reserve a place, call Jane on 01926 858315**

*Make yourself feel at home, bring your own wine,  
cushions or a comfy chair ~ coffee and a pastry in the interval*

**Starring Imelda Staunton, Timothy Spall, Celia Imrie,  
Joanna Lumley and David Hayman**

When Lady Sandra Abbott (Imelda Staunton) discovers that her husband of 40 years is having an affair with her best friend, she seeks refuge with her estranged, older sister, Bif (Celia Imrie). The two could not be more different – Sandra is a fish out of water next to her outspoken, serial-dating, free-spirited sibling. But different is just what Sandra needs and she reluctantly lets Bif drag her along to her community dance class, where gradually she starts finding her feet... and romance. In this hilarious and heart-warming modern comedy, a colourful group of defiant and energetic baby boomers show Sandra that retirement is only the beginning, and that divorce might just give her a whole new lease of life – and love.

# Crafting the Ashow Map

Diana, Judith, Marian, Clare & Janet

**C**hristmas 2010 brought in, along with the snow, the idea of a crafting project. Within a few years – seven in all – it was finally completed! The idea of a map took some time to crystallise in the minds of those who had come together and it was quite a while before we started stitching because the map itself had to be prepared.

It was always in our general ethos that the project would use, wherever possible, materials gathered from our own stores of fabrics, knitting wools, tapestry and crewel wools, canvas, embroidery silks and cottons, hessian, old rope and garden string, and embellishment of beads (some from discarded jewellery and sequins). We had, finally, at our disposal, a very large ragbag.



The basic design of the map has three main features. The base maps used were the Stoneleigh Estate map of 1649 and a current Google Earth map, the aerial view of which enabled us to pick out features such as the ridge and furrow, details of medieval times and current tractor marks. Such maps allowed us to span the centuries. In addition to the patterns of the various



fields and the location of the village within them, we chose to represent two features of old maps, namely the sun and wind.

The second feature that the landscape shows is the transition from spring to winter, capturing the changing colours of the countryside, gardens and agricultural land. The changes are perhaps best represented by the arable land, where one cornfield depicts spring growth to harvesting in late summer, and another a mixture of stubble and autumn ploughing, with the final arrival of snow on its northern border.

The third feature is the border. It constitutes a calendar, which illustrates the various festivals of the church and village throughout the year, notable and listed buildings, animals, birds and seasonal flowers.



Using what we generally called a country palette, we were never afraid to break our own rules, for when we did, it changed our own outlook and had unanticipated consequences which allowed the map to develop its own “persona” (a somewhat quirky one). Working together in the way we did also allowed us to develop our creative process in an organic fashion.

The techniques which were used were varied, as were materials. The village, gardens, allotment and church, were all worked on canvas in a mixture of crewel wools and silks. The fields constituting the arable land were depicted through quilting, knitting with embroidery showing the beginnings of a winter



crop, beaded canvas work in long and short stitch and turkey stitch (rug stitch). A pattern of dyed rope overlaid with angelina to create the effect of reflected light from snow illustrated a further arable field. In contrast, the

meadowland (worked largely on a variety of green base fabrics) depicted a buttercup meadow in needle lace with embroidered flowers and a hayfield (worked on felt) overlaid with string and metallic thread. The remaining grazing meadows were felted, the sheep appliquéd in natural sheep's wool, and the cattle felted on patches.



Not to be forgotten is the River Avon which is, incidentally, where we began. On a background of a curtain fabric sample, metallic threads, beads and sequins were used in depiction of the ripples and rough water and a pair of swans.

Adjacent to the river is a flooded area of willow brush. This area was knitted in a lacy stitch and embroidered with trees.

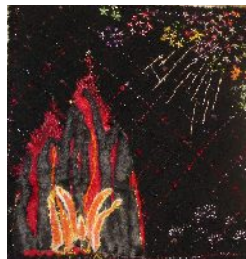


To accomplish the task, weekly meetings took place, generally stitching round a kitchen table. As time went on, most of the stitching of the village and gardens was done in individual homes, with meetings centred around general progress.

Finally, when the map elements were finished and had to be put together, it became too unwieldy and we transferred them to a table-tennis table in another home. At the same time as we were stitching the pieces of the map together, the 32 pieces of the border showing the village houses and festivals were being worked at home before their final assembly. Much more time than we had reckoned for was taken up at this stage, so we were

elated when the last piece of our two-metre-square jigsaw was slotted into place.

The first time we saw our work in the vertical was when, bathed in sunlight, it was hung in Ashow Church on 25<sup>th</sup> April ahead of the grand unveiling on the 27<sup>th</sup>. We hope it will bring much pleasure to all those who view it in years to come, just as it brought us much pleasure creating it.



## **VILLAGE ORGANISATIONS CONTACT LIST 2018: Amendment**

Please note that Hannah Watts is now the Clerk to the PC  
01788 890618

**“The Heart of Stoneleigh” defibrillator in the phone box on The Green**  
**Co-ordinator: David Ellwood 07785 284482 text if no reply**

### **Trained volunteers:**

John Churchley .....	07885 496795	Becki Coombe .....	07841 378404
Laura Elliot .....	07738 222969	David Ellwood .....	07785 284482
Richard Hancox .....	07770 826310	Ian Huston .....	07974 237331
Sharron McEldowney ...	07760 101775	Claire Neale .....	07557 675842
Lisa Reay .....	07716 416320	Martin Smith .....	07958 955629
Mary Taylor .....	07890 535506		

**Remember: Always ring 999 first!**



# Stoneleigh Village Club

Est 1856

[www.facebook.com/stoneleighvillageclub](http://www.facebook.com/stoneleighvillageclub)

[stoneleigh.villageclub@gmail.com](mailto:stoneleigh.villageclub@gmail.com)



*Welcome to the start of summer!*



Congratulations to our Knit and Natter group who were recently in the Kenilworth Weekly News for donating around 100 poppies to the Warwick Poppies 2018 project! You are the winner of our **Best Facebook Picture of the Month** competition – **Nicky Sawdon**, please claim your free drink!



Fancy a free drink yourself? It's easy! Post a photo to Facebook and include Stoneleigh Village Club in your post so that it gets reposted on to our page – [www.facebook.com/stoneleighvillageclub](http://www.facebook.com/stoneleighvillageclub). The winner will be posted in the Stoneleigh & Ashow News, so get snapping and posting!

# Stoneleigh Village Club

Est 1856

[www.facebook.com/stoneleighvillageclub](http://www.facebook.com/stoneleighvillageclub)

[stoneleigh.villageclub@gmail.com](mailto:stoneleigh.villageclub@gmail.com)



## Upcoming Events

Mondays	<b>Darts Team</b>	8.30pm
Tuesdays	<b>Pool Team</b>	8.30pm
Tuesday 17 <sup>th</sup> July	<b>Coffee Morning</b>	10.30am – 12.00pm
Wednesdays (11 <sup>th</sup> July, 25 <sup>th</sup> July)	<b>Knit and Natter</b>	7.30pm
Thursday 12 <sup>th</sup> July	<b>Book Club</b>	7.45pm for 8.00pm July book: “Goodnight Lady” by Martina Cole <i>Feel very welcome to bring nibbles!</i>
Saturdays (weekly)	<b>Run Club</b>	9.00am – 9.45am <i>Meet at SVC for a ‘flat’ 3/4/5km leisurely run!</i>
2 <sup>nd</sup> Saturday (11 <sup>th</sup> August)	<b>Walk Club</b>	10.30am – 12.00pm approx <i>Approx 10km walk</i>
4 <sup>th</sup> Saturday (25 <sup>th</sup> August)	<b>Leisurely Walk Club</b>	10.30am – 1.30pm <i>Approx 5km walk Slow and steady, snails welcome, rests included!</i>

## Club opening hours

Monday – Thursday	7.30pm – 11.00pm
Friday	5.30pm – 11.00pm
Saturday	12.30pm – 3.00pm & 7.30pm – 11.00pm
Sunday	12.30pm – 3.00pm & 7.30pm – 10.30pm

# Fit at 50: 10k update

---

Lucy Morris

**W**ell, we did it! On Sunday 10<sup>th</sup> June 2018, Phil and I ran from Warwick Castle to Kenilworth Castle – a distance of 10 (mainly uphill) kilometres – without stopping. Our time was 1:10:52 - neither super-speedy nor super-slow. And would you believe we're even contemplating repeating the experience next year?!

You may recall that we were both fundraising; Phil for St Peter and St James Hospice, who cared for his sister-in-law at the end of her life, and me for Bloodwise, following the untimely death of my friend's wife, Gemma, from Acute Myeloid Leukaemia. If you've made a donation, we can't thank you enough. If you'd still like to donate, our fundraising pages are:  
<https://www.justgiving.com/fundraising/lucy-morris23>  
<https://www.justgiving.com/fundraising/phildotmorris>

And, just in case you don't believe me, here's photographic evidence of me and Phil on Brookside Avenue (just minutes away from the finish line) looking remarkably happy, considering we're just approaching the 9k mark!



# The Story of the Stoneleigh Stitchers

---

Margaret Wallis

**D**uring Trinity Sunday Service on 27<sup>th</sup> May at St Mary the Virgin Church in Stoneleigh, the Revd Nikki Moon dedicated a booklet which tells the story of The Stoneleigh Stitchers. For over a decade from April 1990, a group of dedicated volunteers designed and stitched over 60 pew cushions and associated items under the guidance of a longstanding Stoneleigh resident, the late Eileen Burman, who left a bequest to the church to enable a permanent record of the project to be published.



**Early Stoneleigh Stitchers**

L to R: Mary Beagrie, Janet Parham, Sheila Rench,  
Marian Murray, Lena Crockett & Eileen Burman

The Parochial Church Council and the Stoneleigh History Society collaborated in the preparation of the booklet in accordance with her wishes.

Eileen Burman's daughter, Clare Sawdon (currently the High Sheriff of Warwickshire), gave an address highlighting her mother's creative and organisational skills and how the sense of community generated through the creation of the cushions had proved a joy and support for those directly involved and for the wider community.

Clare was accompanied by her adult children, John and Kate, who many years ago had contributed a cat and a horse and rider respectively to one of the cushions. Other cushions depict village scenes, representations of village organisations, local vegetation, symbols dear to the hearts of some sponsors, and medieval symbols.



It was lovely to see some of the original stitchers and sponsors at the service, which was a testimony to the community spirit in Stoneleigh, past and present.



The booklet was put together by Margaret Wallis (on behalf of the History Society) and Margaret Brown (on behalf of the PCC), with photographs of all the cushions taken by Derek Robinson of the History Society. Many visitors to the church comment on the beauty and variety of the cushions, and now they will be able to buy an explanatory account of them all.

Booklets are available from the vestry in the church.



# All Good Gifts

---

Revd Nikki Moon | 07891 012660 | [njmoon@outlook.com](mailto:njmoon@outlook.com)

**W**hat are you thankful for today? Perhaps it's the lovely weather we've been enjoying or the sound of the birds singing. Perhaps it is something much bigger: the birth of a baby, a tax refund or the support of a friend through difficult times.

Being grateful, even for the smallest of things, is known to have a positive effect on our well-being and mental health. However, it is not always that easy to be grateful in life when times are tough. Another way to increase our well-being is to offer the gifts we have within us to help others. A kind word or helping hand can make a difference to the lives of others who are experiencing tough times and can give us a positive boost too. The first responders in this area and across the region give of their time and talents voluntarily and, in doing so, save countless lives and relieve the suffering of many others. A first responder helped my own son a few years ago and I will be forever grateful for that help in time of trouble.

I have also noticed the number of people who give their time to the upkeep of the church and the churchyard. It seems there is always someone around with a lawnmower or power tool in hand. I would personally like to thank all those who contribute to the upkeep of our churches. Being a first responder or mowing churchyards may not be everyone's cup of tea or suit the natural gifts that we have been given, but each of us is created to offer ourselves and our God-given gifts in the service of others, whether it be the gift of time, the gift of a phonecall to let someone know we care, or volunteering to do a specific task.

During July we, in the church community, will be exploring the theme of gifts, how to be grateful for what we have, and also how to offer our gifts in the service of others. On Saturday 21<sup>st</sup> July from 10.00am to 11.30am in Stoneleigh Church, we will be offering the gift of hospitality, with refreshments and cake, as well as an opportunity to chat to those who give of their time and talents to ensure Sunday morning worship goes well. If you have often wondered what happens in church during worship, then do come along and chat to those who make sure it happens. If all you want is a cup of tea and a piece of cake, then come anyway and enjoy the warm welcome and beautiful setting of your historic church building. With every blessing.

# SUMMER PIG ROAST



*Piggy Perfection!*

**Sunday 26<sup>th</sup> August 2018**

Commencing 12.30pm at Ashow Village Club Garden

Food from 1pm (vegetarian option available)

Adults £17.50 / Children (12 & under) £6

*Fun & games*

*Proceeds to Ashow Church*

Tickets available from

Tony Gregory (Club Steward 01926 717084) / Mrs Kate Jones 01926 853511

Dr Stephen Harvey 01926 852543 / [stephen.harvey@doctors.org.uk](mailto:stephen.harvey@doctors.org.uk)

## Duck Race & Village Fete



**Saturday 18<sup>th</sup> August 2018**

**Fun for all the family!**

Stalls, stalls, stalls...

Look out for posters in the village

# Stoneleigh History Society

---

Sheila Woolf | 024 7641 8759 | [shewoolf@hotmail.co.uk](mailto:shewoolf@hotmail.co.uk)

**O**ur May meeting on the centenary of women's suffrage was well attended and thought-provoking. On 26<sup>th</sup> June, too late to report in this edition, a special meeting of the Society took place, when Philip Gill spoke about his extensive researches into those who lived in Stoneleigh's almshouses between 1841 and 1911. There are fascinating and surprising stories here, and Philip's book, with its wealth of information, was officially "launched". It is a true "labour of love", which I think Philip began in 2011! Copies, costing £5, may be obtained directly from Philip or from the Society.

We shall not have a meeting again until September, but there is still plenty going on. We have almost completed photographing all the churchyard headstones and, so far, have documented over 1,000 burials. These are available to see on the "Burial Database" of our website – **[www.stoneleighhistorysociety.org.uk](http://www.stoneleighhistorysociety.org.uk)**.

As you will see on page 12, the story of the tapestry cushions in Stoneleigh Church has been published jointly by the church and the Society, under the capable management of Margaret Wallis and Margaret Brown. The publication was blessed at a special service on 27<sup>th</sup> May, when we were delighted to see many old friends. Copies of the booklet can be bought from the vestry in the church.

At the Duck Race in August, we shall have on sale our 2019 calendar. After the last calendar, many people asked us to do another, and this time we have solely used a selection of the photographs of Will Blagburn, who died last July. Will spent many years documenting the life of Stoneleigh with his camera, so it has been hard to choose just 12 scenes from his vast collection. He would have been 90 in October 2019 and so it is particularly fitting that we pay this tribute to him. All profits from sales will go to Myton Hospice, so please come along to the Duck Race and buy one (or several!) for this excellent cause. They will be available from mid-July so, if you can't wait until the Duck Race, you can buy one by contacting me. The cost is £7.50.

# Parish Council Notes

---

**Mrs Sarah Windridge, Parish Clerk**

## **Meetings**

The July Ordinary Council Meeting will be held at Stoneleigh Village Hall on Thursday 12<sup>th</sup> July 2018 at 7.00pm.

## **A note from the Parish Clerk**

I am sure that many of you know that the meeting on 12<sup>th</sup> July will be my last. I have thoroughly enjoyed being the Clerk for Stoneleigh and Ashow Parish Council over the last 18 months, and will miss everyone that I have met and worked with. The villages are fortunate to have so many residents and Councillors who care so much about the local area and who want to help retain the rural nature of this beautiful part of Warwickshire. Thank you to everyone who has helped and supported the Parish Council over the last few years.

*With best wishes from  
Sarah Windridge, outgoing Clerk to the Parish Council*

The new Clerk, Hannah Watts, will start in the role on 9<sup>th</sup> July and is looking forward to getting to know everyone and working closely with the community.

## **HS2 News**

*(Please also see the report from the Stoneleigh Action Group on page 22)*

On Thursday 14<sup>th</sup> June, the Parish Council welcomed Ashley Jackson and Mark Smith from Laing O'Rourke / Murphy (HS2 Early Works Contractors) and Alan Payne from HS2 Ltd to a Parish Council meeting. A presentation was given which provided details on early works which have already started, such as relocation of newts and archaeological surveys; plus any more planned early works which include the construction of the workers' compound between Ashow and Stoneleigh and relocation of utility lines. Councillor Bianco asked the representatives from HS2 to ensure that the impact of the workers' compound on the villages of Ashow and Stoneleigh is mitigated as much as possible. The plans for the compound are being finalised and will be shared with the Parish Council when they are completed. Mr Alan Payne from HS2 Ltd agreed that the Main Works

Contractors would attend the Parish Council meeting on 11<sup>th</sup> October to provide another update.

To view the full presentation, including the map of the workers' compound and proposed exit and entrance routes, please visit:  
**<http://stoneleighshowparishcouncil.btck.co.uk/VillageMatters/HS2News>**.

Or to view the full minutes of the meeting, including the question and answer session, please visit:

**<http://stoneleighshowparishcouncil.btck.co.uk/CouncilMeetings/Minutes2018>**.

HS2 are hosting more local drop in sessions for residents.

**Drop-in session: Balsall Common**

Monday 2<sup>nd</sup> July 2018, 12.30pm to 3.00pm

Balsall Common Village Hall, 112 Station Road, Balsall Common CV7 7FF

**Drop-in session: Burton Green**

Monday 2<sup>nd</sup> July 2018, 6.00pm to 8.00pm

Burton Green Village Hall, Hodgetts Lane, Burton Green CV8 1PH

**Drop-in session: Cubbington**

Thursday 19<sup>th</sup> July 2018, 11.30am to 1.30 pm

Cubbington Village Hall, Broadway, Leamington Spa CV32 7JR

**Drop-in session: Stoneleigh**

Friday 12<sup>th</sup> October 2018, 11.30am to 2.00pm

The Barn, Stoneleigh Park, Kenilworth CV8 2LZ

Anyone with queries about HS2 can also email **[HS2enquiries@hs2.org.uk](mailto:HS2enquiries@hs2.org.uk)** or call freephone 08081 434434. Information is also available at:

**[www.gov.uk/government/organisations/high-speed-two-limited](http://www.gov.uk/government/organisations/high-speed-two-limited)**

**Parish Council email distribution list**

The Parish Council would like to create an email distribution list for the Parish. This will be a fantastic way to stay well informed about local news, planning issues, HS2 and local events. If you would like to be included on the email list and receive frequent updates and news about your local area, please email the clerk, Sarah Windridge on:

**[stoneleighshowparishcouncil@gmail.com](mailto:stoneleighshowparishcouncil@gmail.com)**



# The Ashow Organ 'Puff' Fund

---

Susan Spencer on behalf of the Ashow PCC

**A**t Ashow Church, there is a chamber organ in urgent need of repair. It is a Bryceson instrument of basic good quality, built in London in about 1873, and given to Ashow Church by the Player family in 1972. Unsurprisingly, after 145 years of continuous use, the organ now only works at about 80% of capacity because the sound board has cracks which need 'caulking up' as well as being generally overhauled. One might say that the organ is running out of puff.



The small village of Ashow by the river Avon consists of about 40 houses and 100 residents. Every Sunday, there is a church service with an average congregation of 17 people, except for special events such as concerts and services at Advent and Christmas, when the numbers swell to over 70.

**The organ is vital to us.** The organ builders have given us an estimate of £3396 excluding VAT, so we need to raise over £4000 by mid-October 2018 to pay for the necessary repairs. We, the Ashow PCC, have applied to a London-based charity, Church Care, for a grant from the Pilgrim Trust. However, in the meantime, we are appealing to you for donations to help pay the bill. **Please will you support our fundraising? Any amount of money towards the project will be most gratefully received.** Donations (cash or cheques made payable to **Ashow PCC** and marked FOR THE ASHOW ORGAN PUFF FUND) should be sent to:

Mrs Anne Gregory, Ashow Church Treasurer  
Club Cottage  
Ashow  
Warwickshire  
CV8 2LE

Alternatively, donations can be made directly to Lloyds Bank:

Account name: Ashow PCC  
Sort code: 30-94-93  
Account no: 01941006

# Stoneleigh WI Report

---

Rachel Gill

**A**t the meeting on 4<sup>th</sup> June, a talk was given by Ted Watson, a professional musician with The Royal Shakespeare Company. He gave a funny and very interesting talk about his working life and entertained us with the variety of instruments which he had brought with him. Some of these were very unusual – some from Tudor times, others relatively new and innovative. An enjoyable evening with a difference.

On the afternoon of 12<sup>th</sup> June, a group of members visited Styvechale Open Gardens in Coventry. They went first to the garden of Val and Roy Horwell in Delaware Road, Styvechale. They then visited the garden of Susan and Graham Pountney at 2 The Hirons, Cheylesmore. Afternoon tea was served on the lawn in beautiful sunshine. Members enjoyed scones, cake, strawberries and a cup of tea. The group made a donation to be shared between the National Garden Scheme and Myton Hospice.

The Craft Group had a very interesting talk and demonstration on quilting by Jane Corbett. Everyone had a go at making a hexagonal pincushion.

The meeting on Monday 2<sup>nd</sup> July will be Members' Night, when the committee takes a back seat and a group of members takes over the running of the evening. The next coffee morning will be on Tuesday 17<sup>th</sup> July at 10.30am in the Village Club.

The next Village Lunch will be on Tuesday 3<sup>rd</sup> July in the Village Hall at 12.30pm. If you wish to book a place, please call Liz Sykes on 024 7641 8301.

## **FREE certified food hygiene course**

**Wednesday 18<sup>th</sup> July 2018**

**6.30pm – 9.30pm**

**Stoneleigh Village Club**

To reserve your place, email [becki.coombe@thelearn2group.org.uk](mailto:becki.coombe@thelearn2group.org.uk)

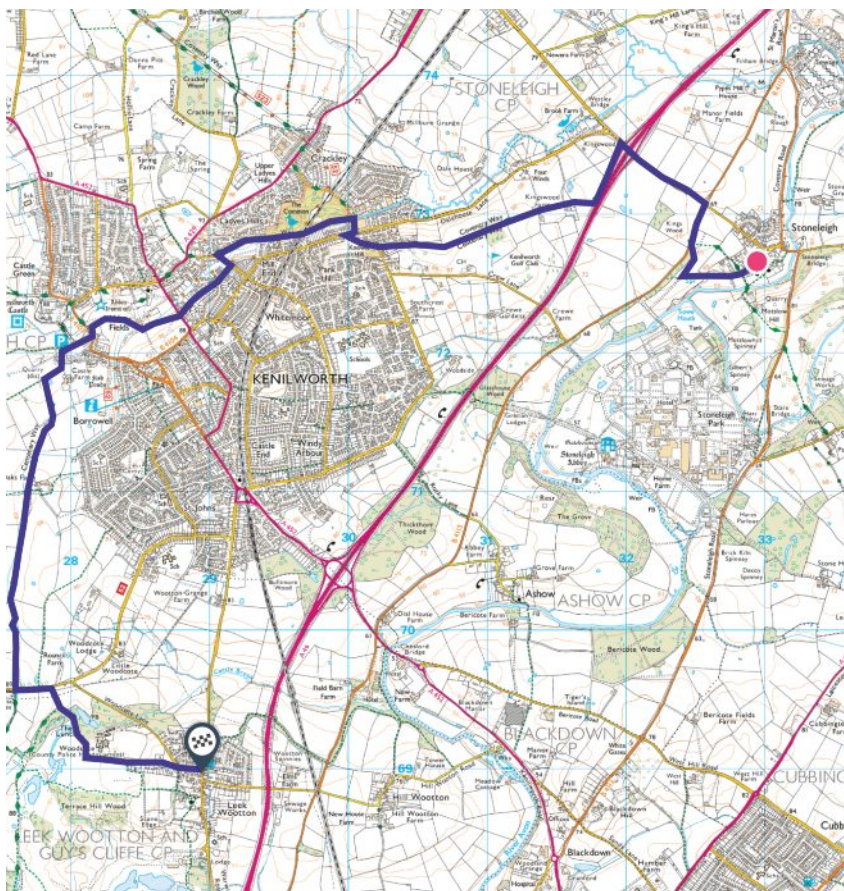
# Stoneleigh Walk Club

## Monthly Guided Walks:

- Every 2<sup>nd</sup> Saturday:      Max 10km FLAT RAMBLE  
Meet and return to SVC, 10.30am start
- Every 4<sup>th</sup> Saturday:      Approx 5km SLOW AND STEADY  
Suitable for those un-used to walking

## CUT OUT AND KEEP

### Stoneleigh Village Club to The Anchor Inn at Leek Wootton Flat: 11.38km



# HS2 Update

---

## **Anthony Bianco on behalf of the Stoneleigh Action Group (StAG)**

**T**he project has had extensive local and national media coverage this month. The most important, the Sunday Times and Financial Times articles of 16<sup>th</sup>/17<sup>th</sup> June alleging that HS2 is mishandling the land and property purchase on the route London to Birmingham, alleging underfunding and the provision of misleading information to Department for Transport and the government.

At local level, the Early Works Contractor Laing O'Rourke / Murphy (EWC LM) spent the bank holiday weekend cutting trees and paths (even in the nesting season) – now called “The Crackley tree-cutting saga” – with limited consultation. This led to MPs, county, district and parish councillors, as well as the Crackley residents, asking HS2 for clarification of the activities. The answer was that they have learnt lessons and communications will improve.

### **Meeting with Jeremy Wright MP (JW), 1<sup>st</sup> June 2018**

*Attended by Anthony Bianco on behalf of Stoneleigh Action Group (StAG) and the Parish Council (PC), with one representative from the other 11 PCs..*

JW led the agenda and gave his updated views and agreement with many of our pre-meeting notes. He promised to take action and report back on:

- Communications
- Contractor discussions and review of alternatives,
- WCC and Highways England
- Breaches of construction practice
- Rural compensation

He will report back to StAG in the next two months.

### **Meeting: Kenilworth Town Council, 7<sup>th</sup> June 2018**

*Attended by EWC LM and Main Works Contractor, Balfour Beatty Vinci (MWC BBV) and HS2 staff. Anthony Bianco and Burton Green Councillor were invited as observers and local area neighbours.*

EWC LM and HS2 apologised for the Crackley misunderstandings. Kenilworth Town Council (KTC) requested a better system to be put in place now. EWC LM provided very limited detail of the plans they have for the next six months, but promised more at the PC meeting on 14<sup>th</sup> June with

more senior staff in attendance. They did release that A46/B4115 compound would be activated this month (see notes below).

KTC had many questions, in particular about clear planning and the operation of the compound on the Kenilworth boundary. MWC BBV agreed that they have a lot of work still to do and will be unable to present any detail until September 2018. They confirmed that the ground and geo data so far provided required a further six months' work to enable detailed design and planning to be carried out.

### **Parish Council Meeting, 14<sup>th</sup> June 2018**

*Attendance by EWC LM and HS2 Project Managers / MWC BBV were unable to attend.*

EWC LM provided a slide presentation for the period June 2018 to June 2019, when they will hand over to MWC BBV the following:

- The A46 compound access from B4115
- Diversion ramp to A46
- A46 junction works – temporary slip road, subject to the site being ready following the new roundabout
- B452/B4115 layout (unfunded so far)
- Major utilities gas main diversion initial works

It should be noted that this was the FIRST time these collated plans have been presented in writing by LWC LM or others to the Stoneleigh Action Group. The PC raised concerns that the plan so far takes very limited notice of the discussions for some three to four years with HS2, and were concerned that no plans from MWC BBV until 2018 could result in work being premature and maybe amended by MWC BBV.

The work on the B4115 compound due to start on 18<sup>th</sup> June (see flyer, limited distribution 8<sup>th</sup>/9<sup>th</sup> June) has now been delayed until early July.

LWC LM noted the need to arrange better communication systems. The PC requested further consultation and have been offered 10<sup>th</sup> October 2018. The PC felt that this was too late because planning by LWC LM will be too advanced for any local plan Bs to be considered. The PC will be requesting that the WCC and local MP assist StAG in a better understanding of the works proposed in the next 12 months.

*(See also the PC report on page 17)*



# Stoneleigh Community Orchard CIC Update

---

Pete Freeman

**D**evelopments relating to the Orchard Group continue at a pace, with the latest having arrived in recent post as correspondence from HM Revenue and Customs accepting our claim for a tax exemption on the first 7,000 litres of cider produced during a rolling 12-month period. This concession is welcomed by all small producers similar to ourselves and goes a small way to restoring faith in the competence of those who form national policy, irrespective of their persuasion and background. You may question in what way this benefits the village. In short, there will be more money available for good causes that relate to our village and for which the orchard serves and has been designed to target.

The cider produced from the harvest of 2017, though less in quantity than that of 2016, has been broadly well received and to such a degree that we are close to selling out! Those villagers who wandered down to the orchard during the impressive blossoms earlier in the year may now speculate about the size of the upcoming harvest, but conventional wisdom should counsel all not to count the chickens until they have hatched as there is still a lot that could go wrong at all points during the process.

Another advance to report on is the development of the Orchard Group's first experimental perry. Perry is a beverage derived by pressing Perry pears. These are small, woody pears which, though unpleasant to eat directly from the tree, take on an entirely new taste following pressing and fermentation. Initial tests point to the future potential for a Stoneleigh Perry, but this is likely to be a premium product because it certainly requires more effort to produce relatively small volumes of juice. The most common country saying relating to perry production states, "Plant pears for your heirs" – a saying that may indeed resonate in Stoneleigh Orchard!

Finally, the Orchard Group intend, at this point in time, to have a presence at the upcoming Duck Race in August, so do take the opportunity to visit our stand and to become acquainted with our project and the personalities operating behind the scenes.

Enjoy your summer!

Orchard friends' subscriptions and yearly renewals for 2018 will cost £10 and can be made to Pete Freeman as Chairman or to Richard Hancox as Treasurer. Cheques should be made payable to Stoneleigh Village Community Orchard CIC. Alternatively, why not become a long-term friend and set up a direct debit?

Contact: Pete Freeman (Chairman)  
5 Church Lane, Stoneleigh  
**[pete.freeman@swift.nhs.uk](mailto:pete.freeman@swift.nhs.uk)**

Richard Hancox (Treasurer)  
**[richard.hancox@kier.co.uk](mailto:richard.hancox@kier.co.uk)**



**The United Benefice of  
The Assumption of our Lady, Ashow  
and  
St Mary the Virgin, Stoneleigh**



## **Contacts**

For pastoral care or to arrange a baptism, wedding or a funeral,  
please contact Reverend Nikki Moon 07891 012660

**[njmoon@outlook.com](mailto:njmoon@outlook.com)**

**Churchwardens:**

**Ashow:** Vacancy

**Stoneleigh:** June Burr 024 7622 7726

Gordon Gatward 024 7669 0746

Richard Ashley 01926 427729 (Deputy Warden)

For any other matter,  
please contact the Parish Administrator:

Jackie Cubbitt 024 7641 5506

**[admin@stoneleighchurch.co.uk](mailto:admin@stoneleighchurch.co.uk)**

Website: **[www.stoneleighchurch.co.uk](http://www.stoneleighchurch.co.uk)**

Office hours: Wednesday 9.00am – 12.00pm, Thursday 9.00am – 1.00pm

# Stoneleigh Church Notices

---

## Holiday Club CANCELLED

It is with regret that we have had to cancel this year's planned Holiday Club. Unfortunately, due to a clash with Revd Nikki's family holiday (which was booked before she came to be with us) and the personal circumstances of other leaders, we have been unable to find anyone to take the leading role this year. We can only apologise for any inconvenience or disappointment this might cause, but we hope to be back in summer 2019. Thank you for your understanding.

*On behalf of the Holiday Club Team  
and the PCC of St Mary the Virgin, Stoneleigh*

## Calling carers of babies and toddlers

Would you be interested in an informal opportunity to meet other mums, dads, grandparents and carers? The Leigh Chapel in Stoneleigh Church is carpeted, has comfortable seating and a small children's play area. We would like to invite families and carers to a drop-in between 10.00am and 12 noon on Tuesday 18<sup>th</sup> September. Refreshments will be on offer, along with a warm welcome. Please do pass the date and time on to others in the village and in the surrounding area who might be interested. If you would like more information (or if this date is not convenient and you would like to be included in future drop-ins), please do get in touch.

*Revd Nikki | 07891 012660 | njmoon@outlook.com*

## See and Taste at Stoneleigh Church Saturday 21<sup>st</sup> July, 10.00am – 11.30am

**Come and see** all the different aspects that go into making Sunday Worship in our churches welcoming, organised and inspiring. **Come and see** those who currently serve in worship – an opportunity to ask questions and see what happens behind the scenes. **Come and see** if there is something you want to get involved in as a way to serve. And if that does not tempt you, we also have tea, coffee and cake and, of course, good company and a warm welcome!

---

J.L.Huthwaite



Property Maintenance Ltd

jayhuthwaite1@sky.com  
07921 842217 024 7501 1320

---

Roofing - Guttering - Lead - Chimney Repairs  
Painting - Decorating - Wallpapering - Coving  
Skirting Boards - Architraves - Doors  
Laminate Flooring - Floor - Wall Tiling  
Garden Maintenance - Patios - Landscaping  
Wall Repairs & Pointing... And More  
—FOR A FREE NO OBLIGATIONS QUOTE—  
—CALL TODAY—  
—NO JOB TOO SMALL—

---

This month's edition of **Stoneleigh and Ashow News**  
was compiled by **Lucy Morris**, who would like to thank all contributors.

It was printed by Warwick Print.

The online colour version can be viewed at  
**[www.stoneleighvillage.org.uk](http://www.stoneleighvillage.org.uk)**.

The September 2018 edition will be compiled by  
**Mike and Bernice Evans**  
**[heronbank8@gmail.com](mailto:heronbank8@gmail.com)**

Heronbank, 8 Coventry Road, Stoneleigh CV8 3BZ  
**Copy deadline: 18<sup>th</sup> August 2018**

We prefer digital A5 copy,  
but paper copy may be submitted as an alternative.

**Advertisements** at £40 (full page A5) or £20 (half page)  
accepted at the editor's discretion, subject to S&A News policy.  
Please note that advertisers should provide their own artwork.



**The United Benefice of  
The Assumption of our Lady, Ashow  
and  
St Mary the Virgin, Stoneleigh**



**Services for July & August 2018**

**July 2018**

Sunday 1 <sup>st</sup>	10.00am	United Holy Communion – Stoneleigh
Sunday 8 <sup>th</sup>	9.30am	Holy Communion – Ashow
	11.00am	All Age Worship – Stoneleigh
Sunday 15 <sup>th</sup>	9.30am	Holy Communion – Ashow
		Fellowship Holy Communion – Stoneleigh
Sunday 22 <sup>nd</sup>	9.30am	Village Service – Ashow
	11.00am	Sung Holy Communion – Stoneleigh
Sunday 29 <sup>th</sup>	9.30am	Charity Village Service – Ashow
	11.00am	All Age Communion – Stoneleigh

*Please note that there will not be a Midweek Communion Service during July*

**August 2018**

Sunday 5 <sup>th</sup>	10.00am	United Holy Communion – Ashow
Thursday 9 <sup>th</sup>	10.30am	Midweek Communion – Stoneleigh
Sunday 12 <sup>th</sup>	9.30am	Holy Communion – Ashow
	11.00am	All Age Worship – Stoneleigh
Sunday 19 <sup>th</sup>	9.30am	Holy Communion – Ashow
	11.00am	Fellowship Holy Communion – Stoneleigh
Sunday 26 <sup>th</sup>	9.30am	Village Service – Ashow
	11.00am	Sung Holy Communion – Stoneleigh